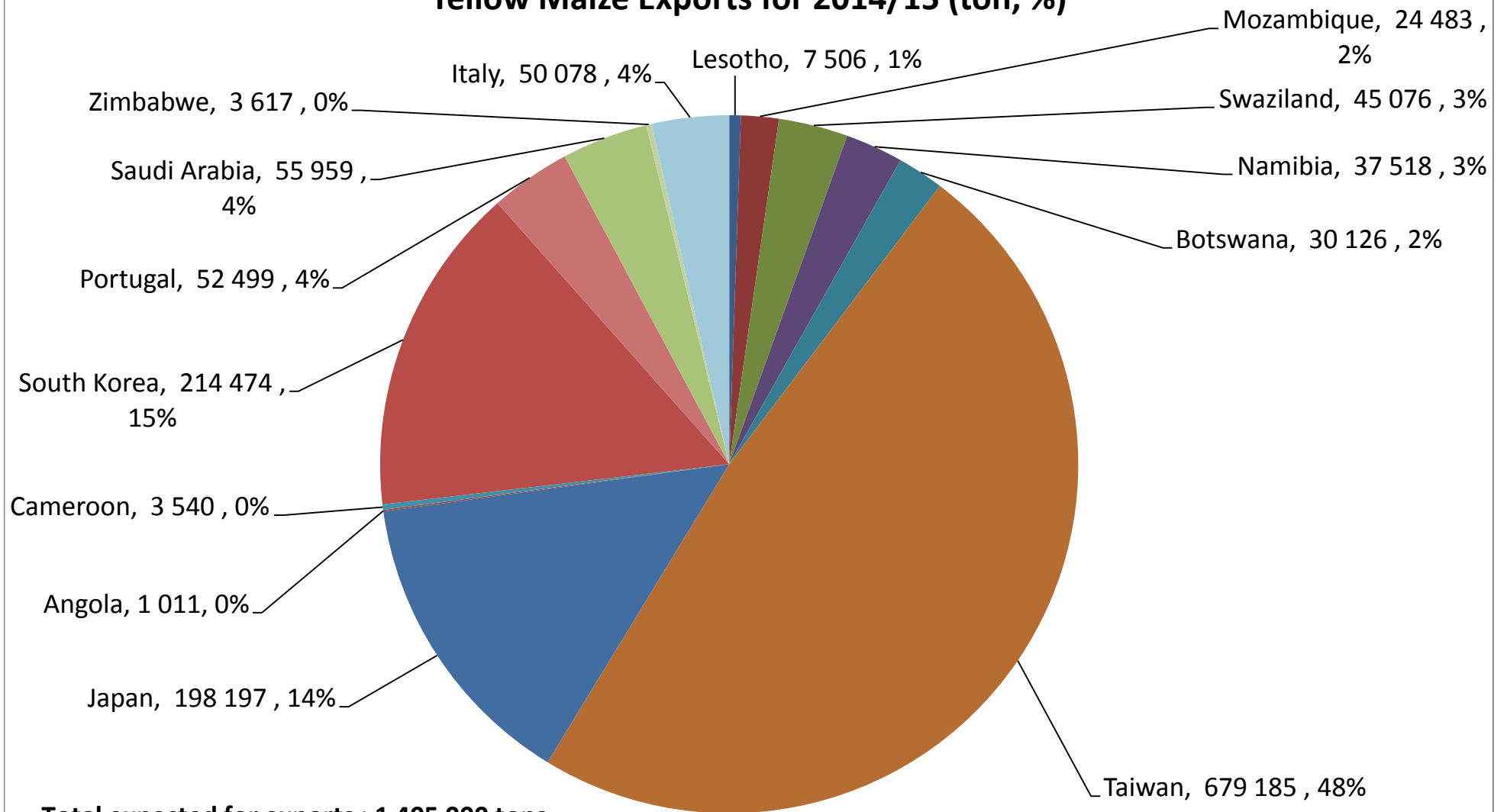
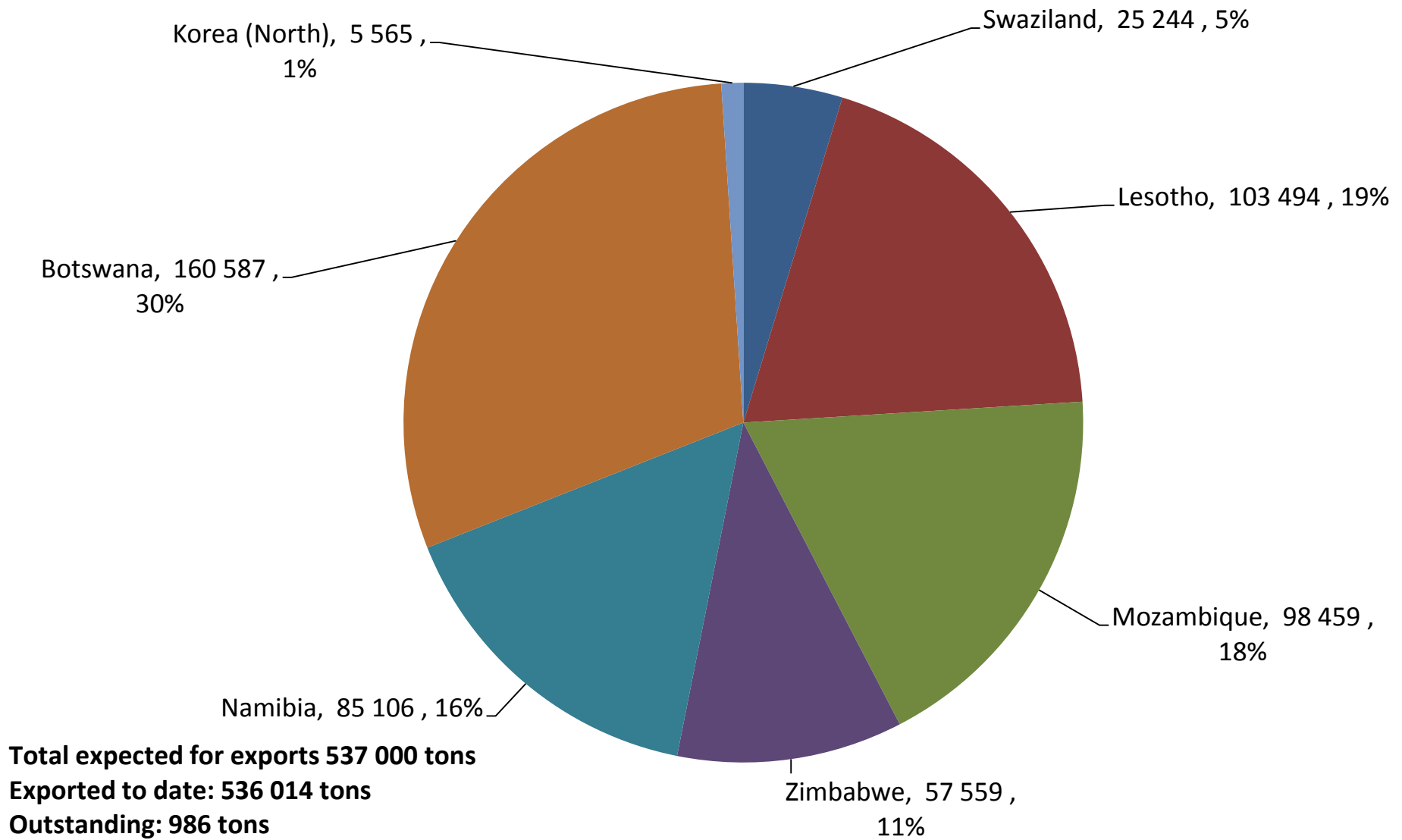


Yellow Maize Exports for 2014/15 (ton, %)

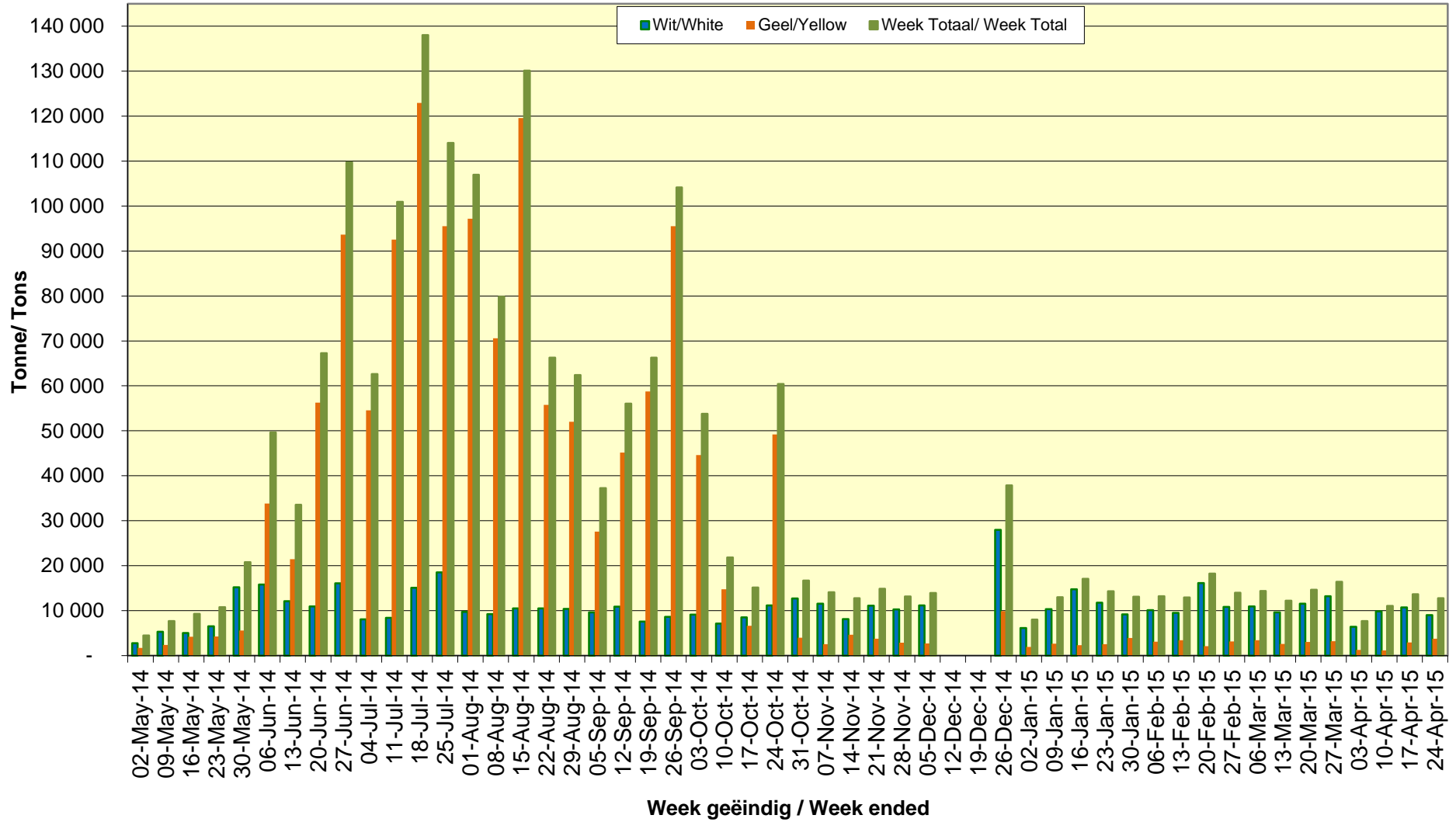


Total expected for exports : 1 405 000 tons
Exported to date: 1 403 269 tons
Outstanding 1 731 tons

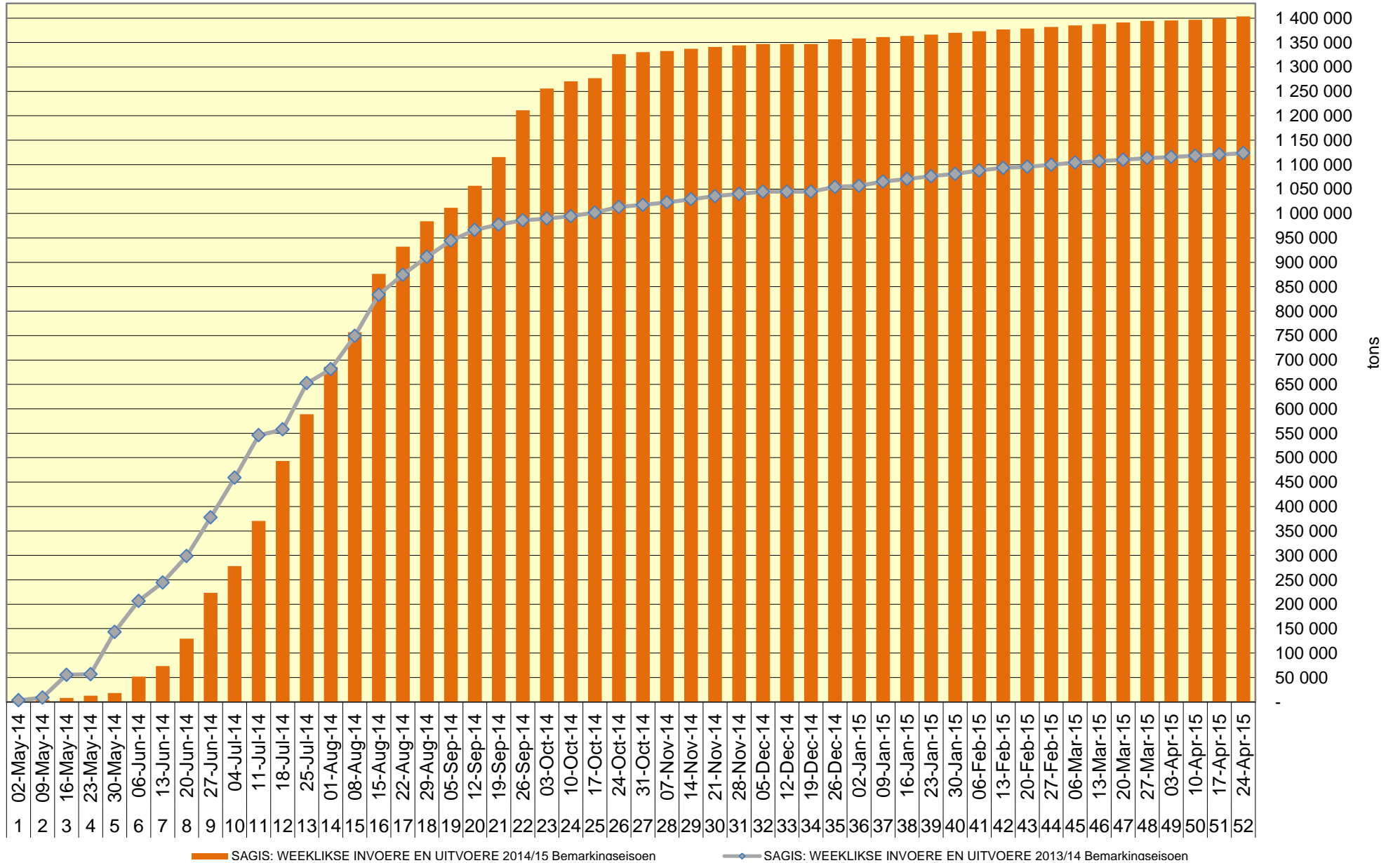
White Maize Exports for 2014/15 (ton, %)



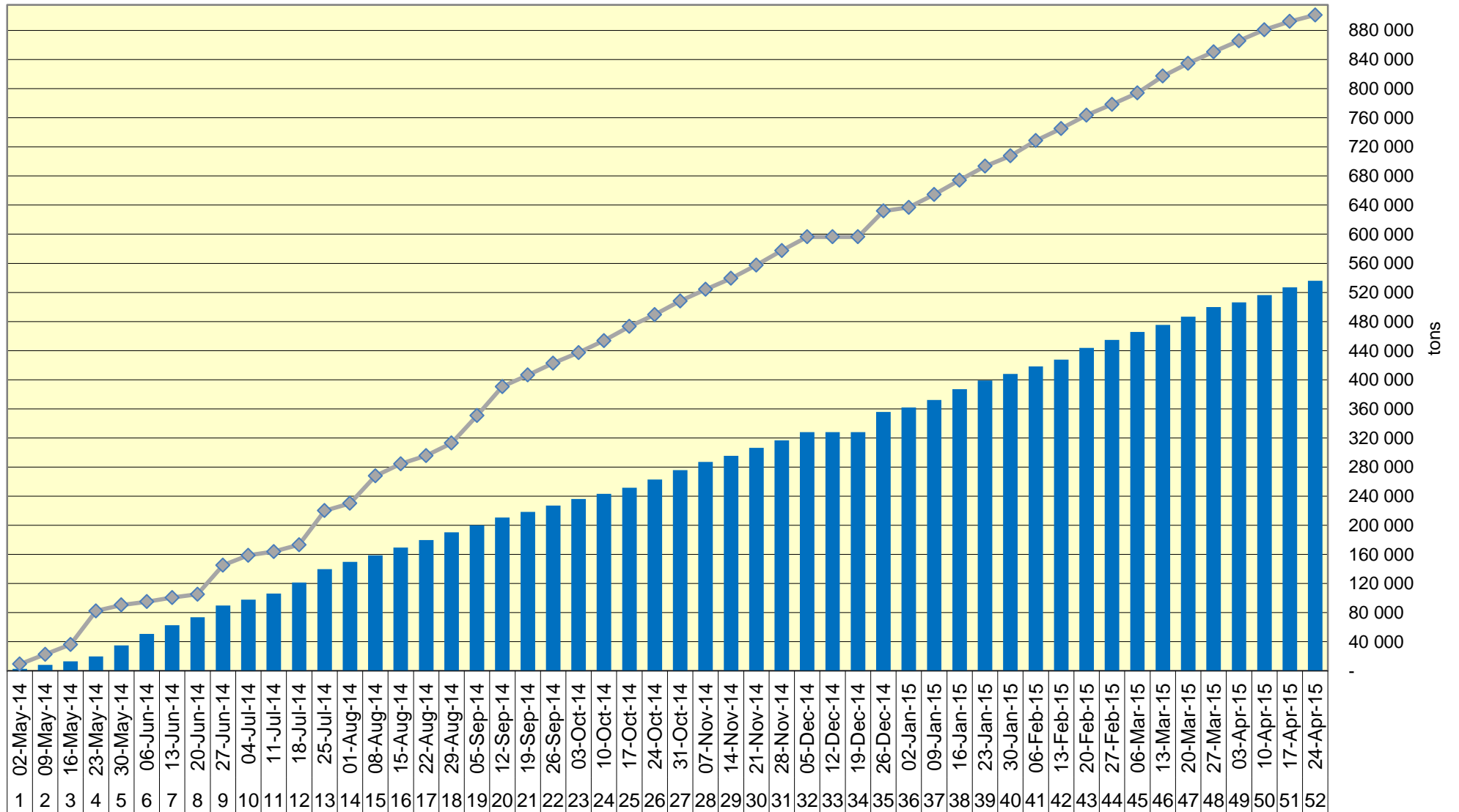
RSA Weeklikse mielie-uitvoere RSA Weekly maize exports



Cumulative Exports of Yellow Maize for 2014/15



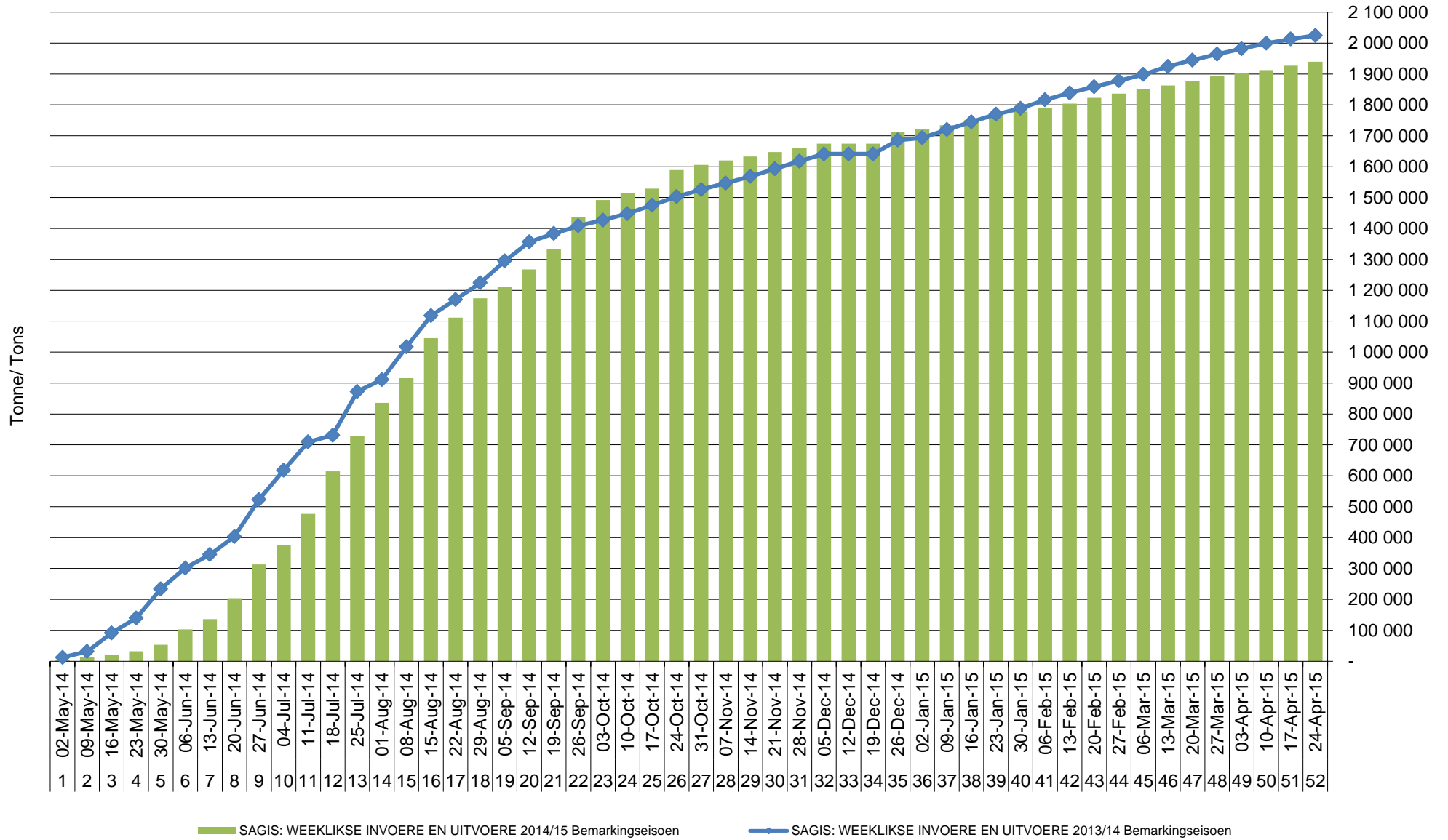
Cumulative Exports of White Maize for 2014/15



■ SAGIS: WEEKLIJKE INVOERE EN UITVOERE 2014/15 Bemarkingsseizoen

◆ SAGIS: WEEKLIJKE INVOERE EN UITVOERE 2013/14 Bemarkingsseizoen

Cumulative Exports of Maize for 2014/15



Cumulative Exports of Maize 2014/15 Bemarkingsseisoen/ Marketing season

