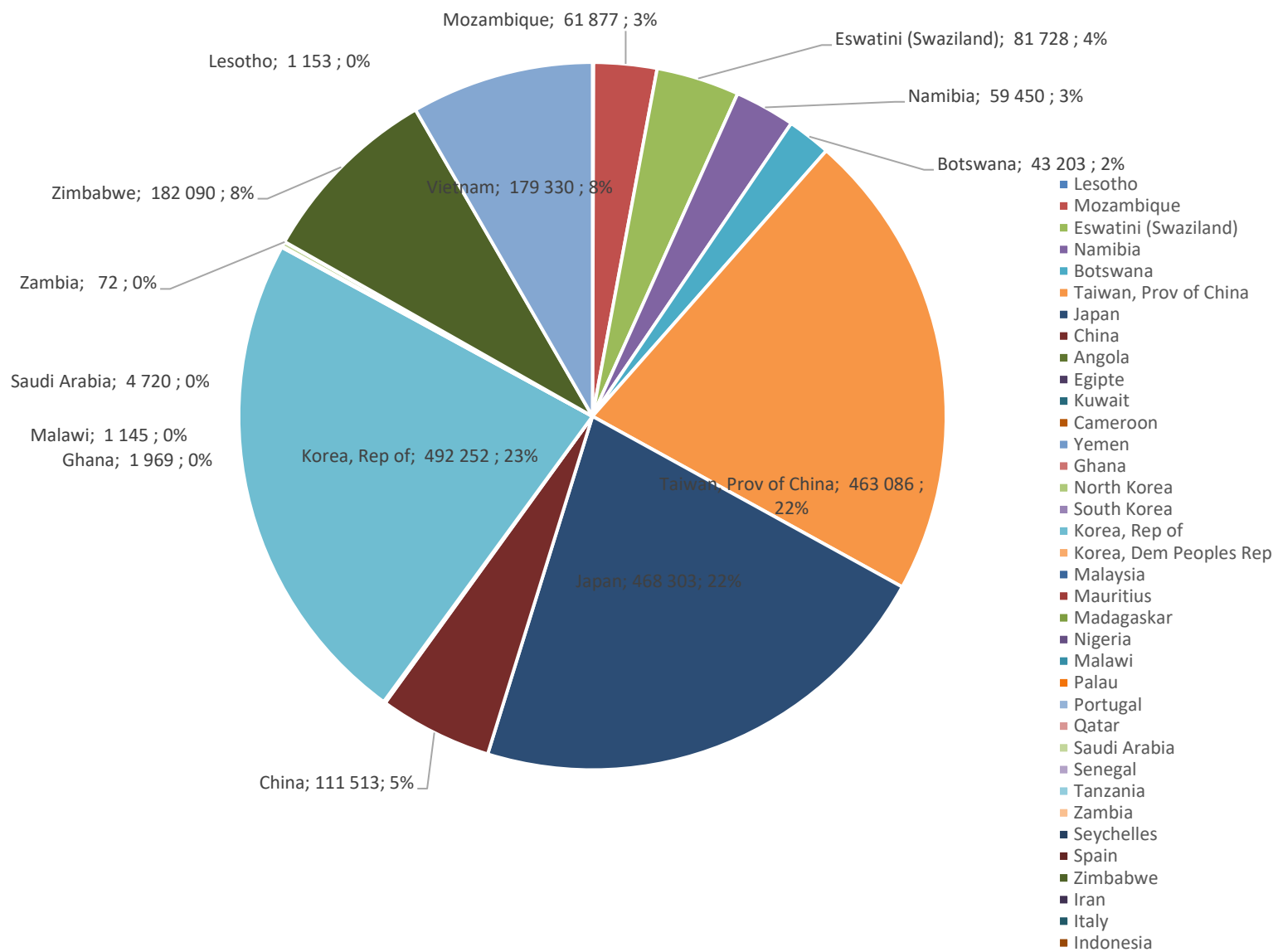
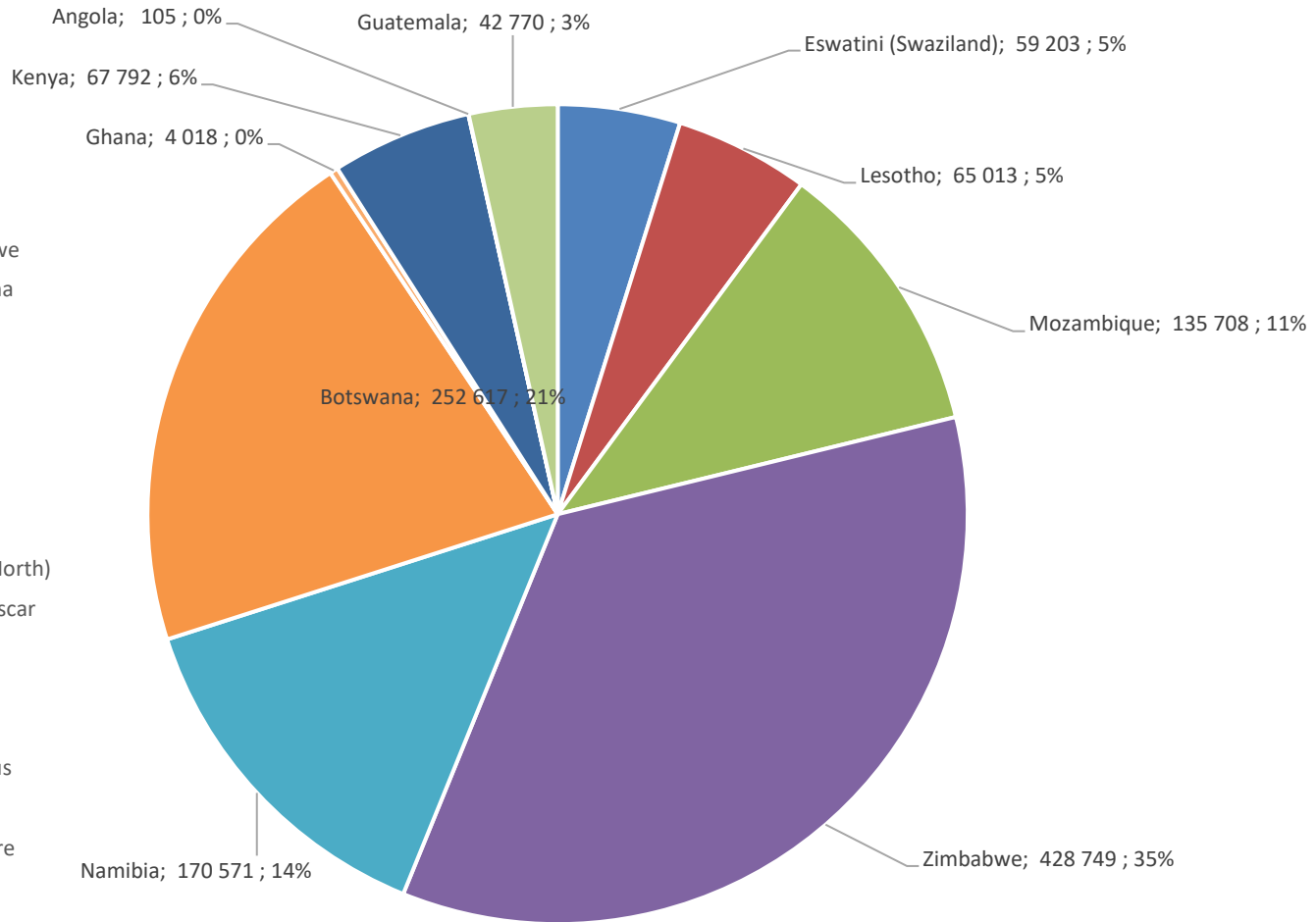


Yellow Maize Exports for 2023/24 (ton, %)

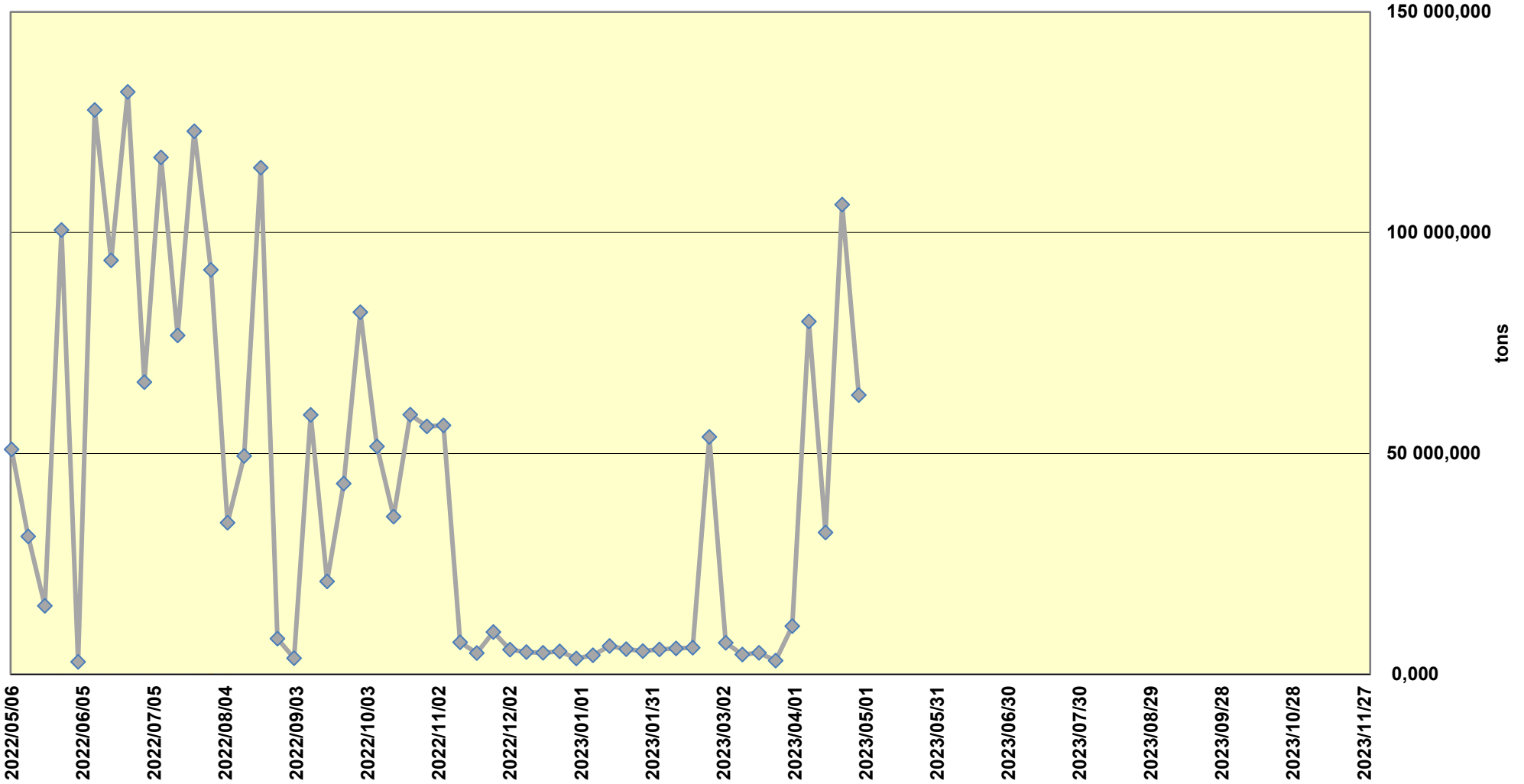


White Maize Exports for 2022/23 (ton, %)



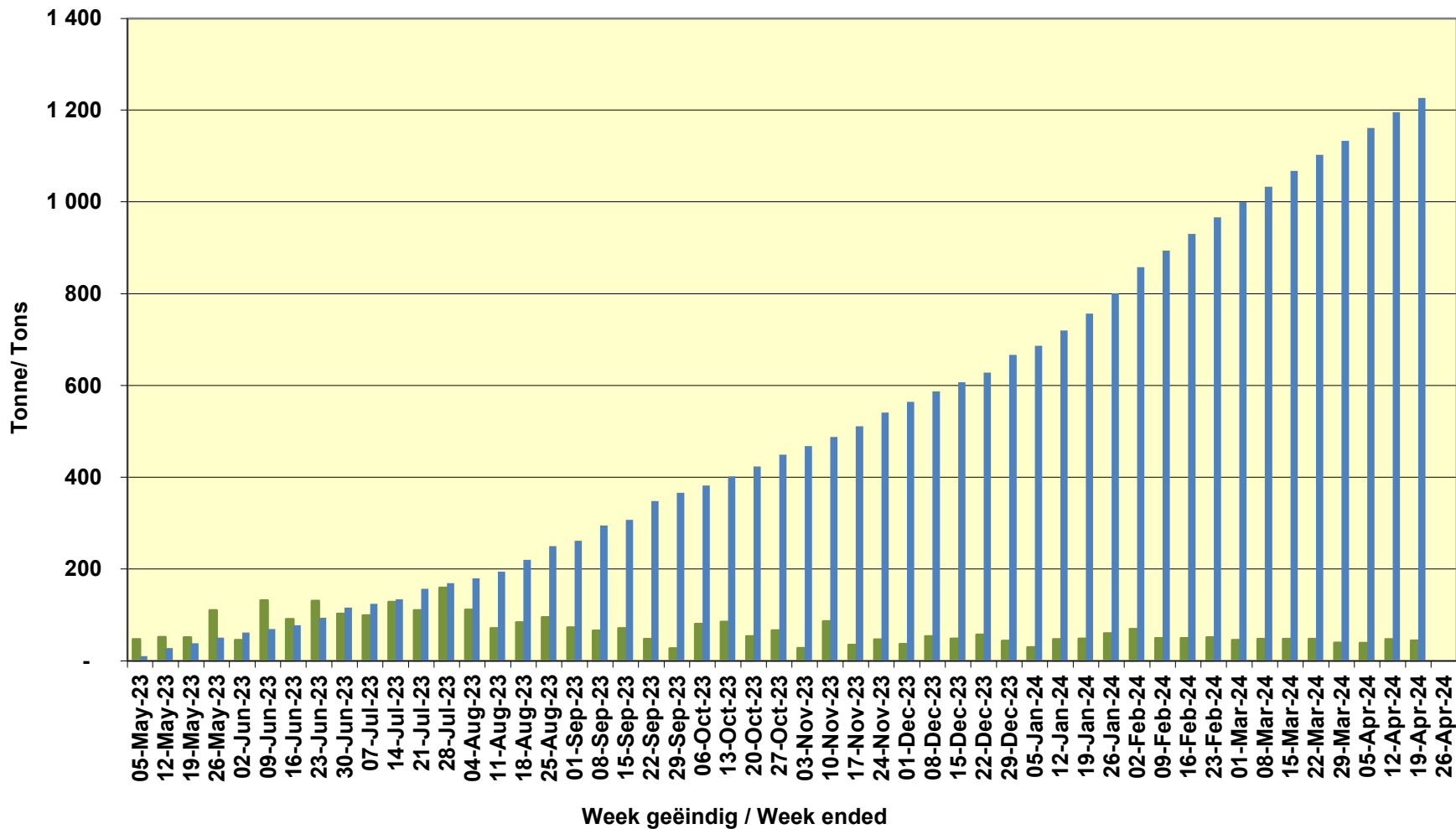
- Eswatini (Swaziland)
- Mozambique
- Namibia
- Mexiko
- Benin
- Cameroon
- Congo
- Dar-es-Salaam
- Ethiopia
- Kenya
- Iran
- Malawië
- Portugal
- Italy
- Sudan
- Qatar
- Spain
- Tanzania
- Angola
- Guatemala
- Togo
- Venezuela
- Lesotho
- Zimbabwe
- Botswana
- Angola
- Brazil
- Chad
- Guinea
- Djibouti
- Ghana
- Korea (North)
- Madagascar
- Mali
- Nigeria
- Somalia
- Mauritius
- Senegal
- Singapore
- Albania
- Honduras
- Malaysia
- Uganda
- Zambia

Cumulative Exports of Yellow Maize for 2021/22



— SAGIS: WEEKLIJSE INVOERE EN UITVOERE 2023/24 Bemaringseizoen
— SAGIS: WEEKLIJSE INVOERE EN UITVOERE 2022/23 Bemaringseizoen

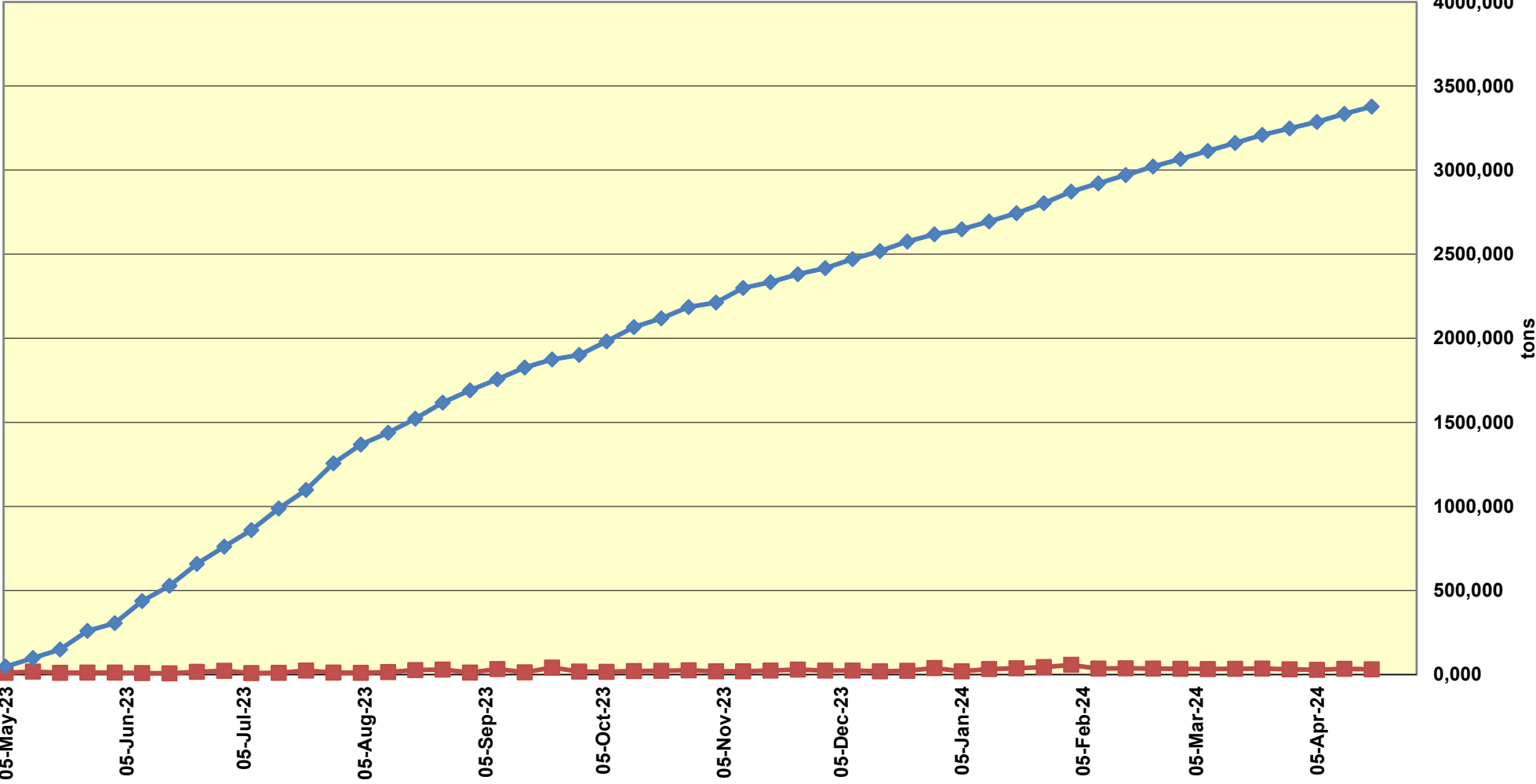
RSA Weeklikse mielie-uitvoere
RSA Weekly maize exports



■ Total / maize Weekliks/Weekly

■ Wit/White

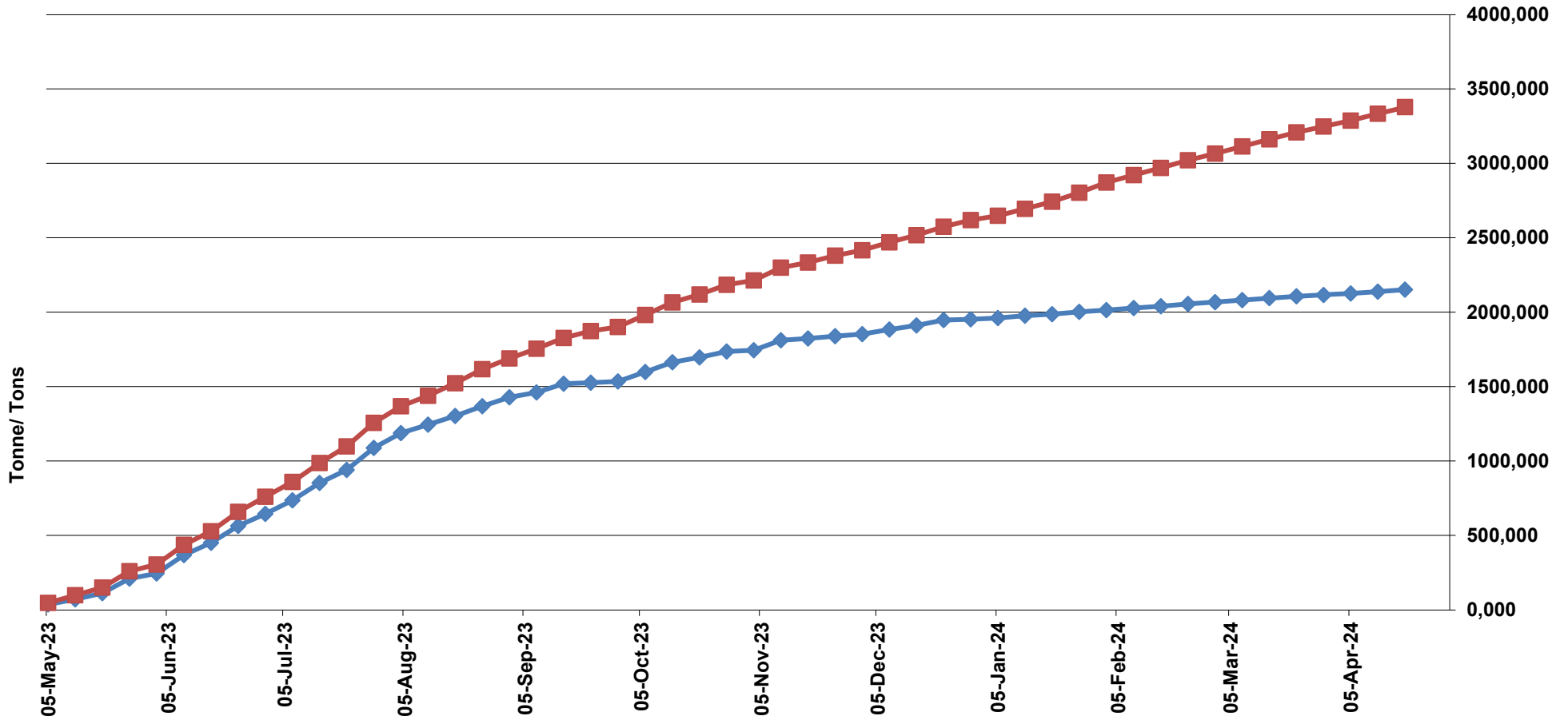
Cumulative Exports of White Maize for 2023/24



■ SAGIS: WEEKLIKSE INVOERE EN UITVOERE 2023/24 BemarKingseisoen

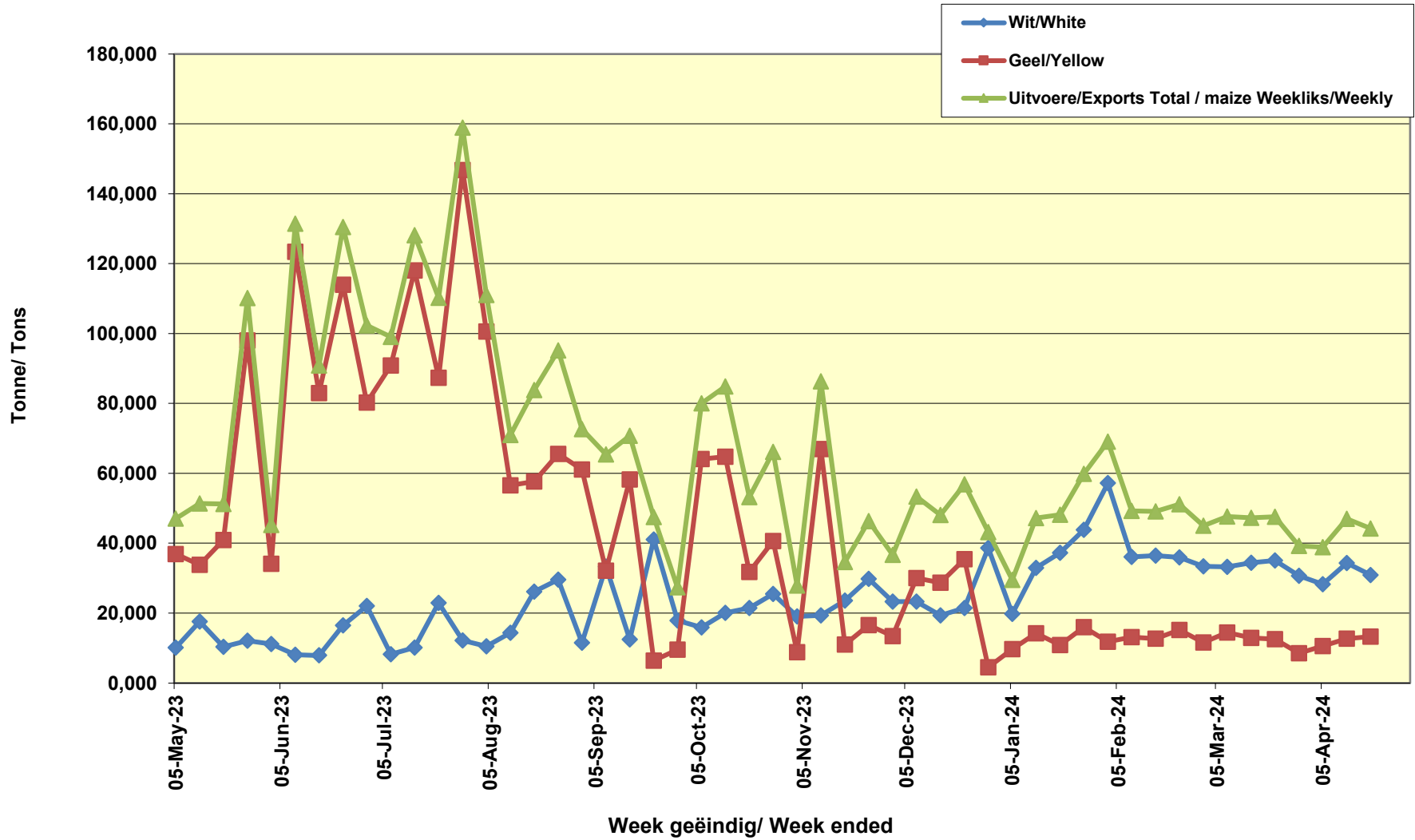
◆ SAGIS: WEEKLIKSE INVOERE EN UITVOERE 2023/24 BemarKingseisoen

Cumulative Exports of Maize for 2023/24



◆ SAGIS: WEEKLIJKE INVOERE EN UITVOERE 2023/24 Bemaringseisoen
■ SAGIS: WEEKLIJKE INVOERE EN UITVOERE 2023/24 Bemaringseisoen

Cumulative Exports of Maize 2021/22 Bemakingseisoen/ Marketing season



Kumulatiewe Invoere van Mielies
Kumulative Imports of Maize
2021/22 Bemarkingseisoen/ Marketing season

