

# Machinery Report/Masjinerie Verslag

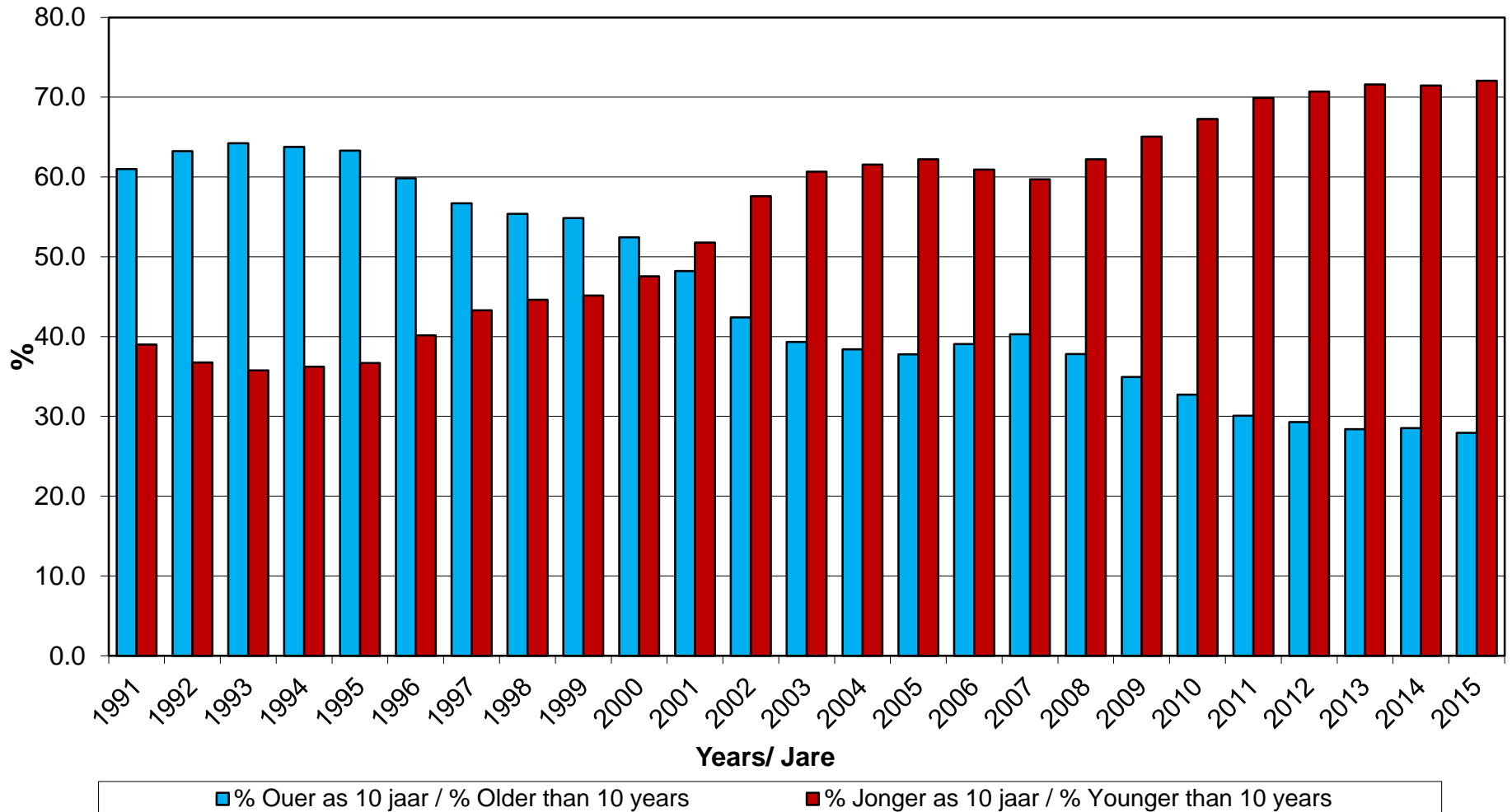


Updated: December 2016

Opgedateer: Desember 2016

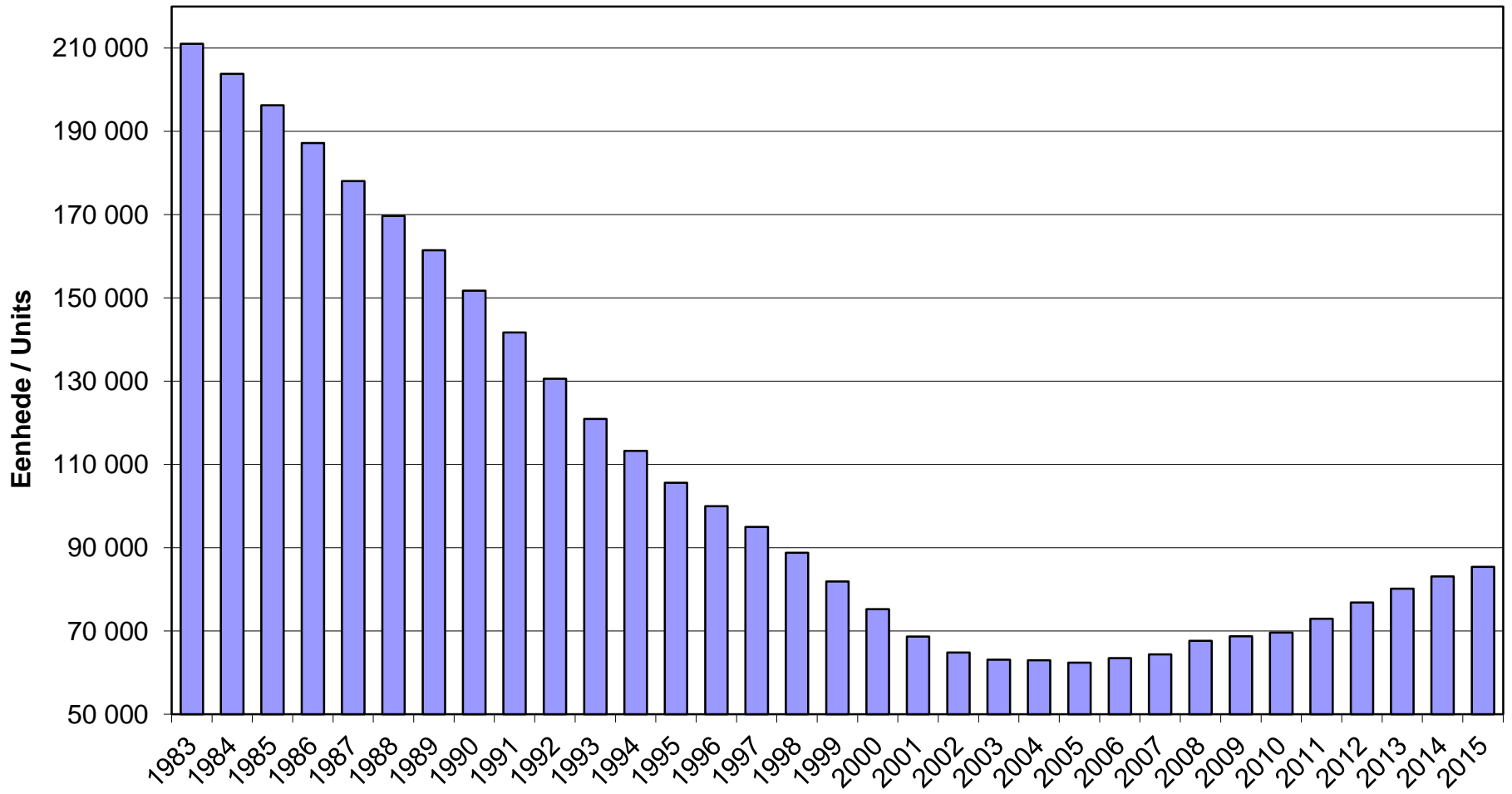
**Disclaimer:** *The information herein has been obtained from various sources, the accuracy and/or completeness of which Grain SA does not guarantee and for which Grain SA accepts no liability. Any prices or levels contained herein are preliminary and indicative only and do not represent bids or offers. These indications are provided solely for your information and consideration.*

# Distribution of Tractor age/ Verspreiding van trekker ouderdom



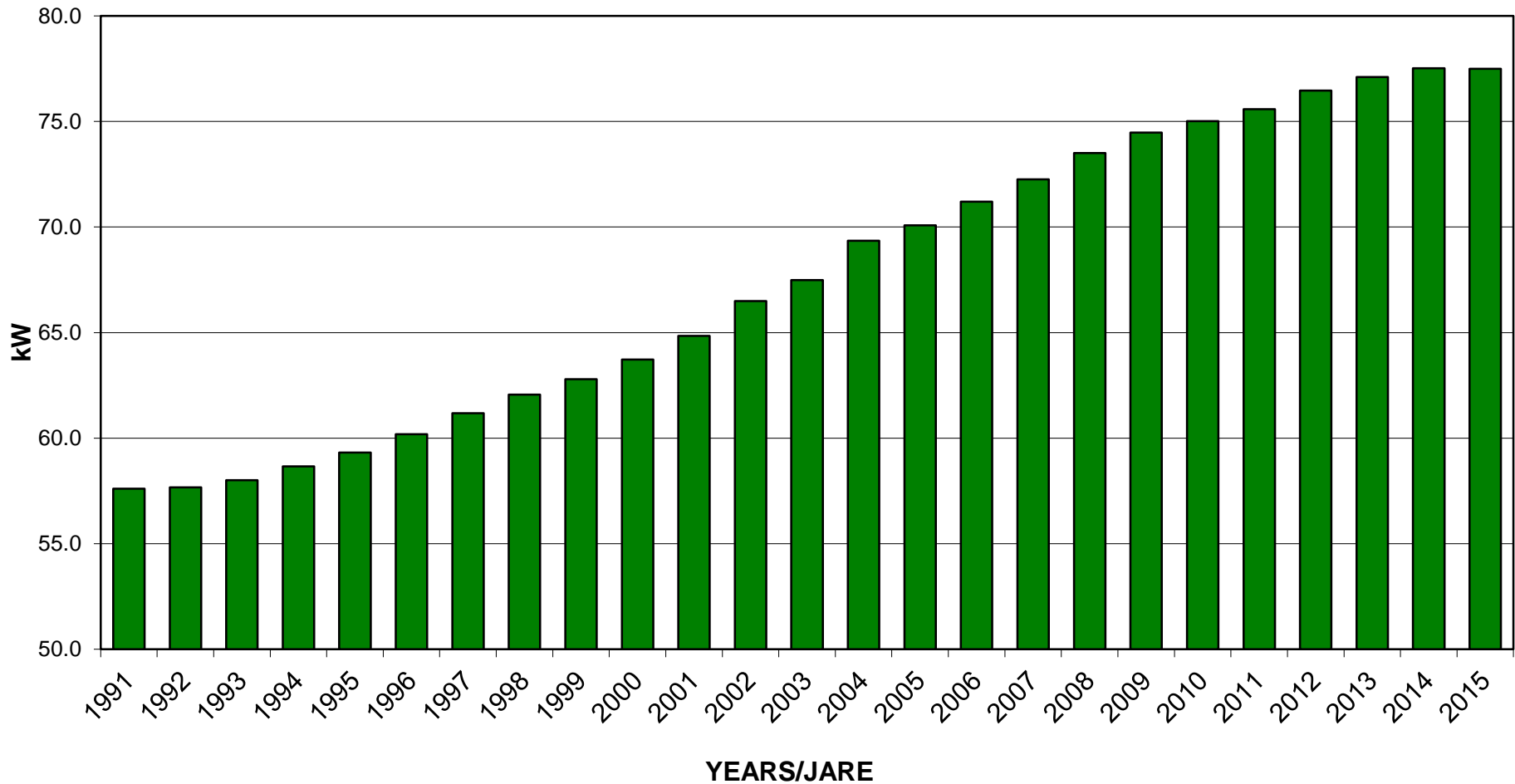


# Total Tractor Fleet / Total Trekkervloot





# Average Tractive power of Tractor fleet/ Gemiddelde trekkrag van trekkervloot



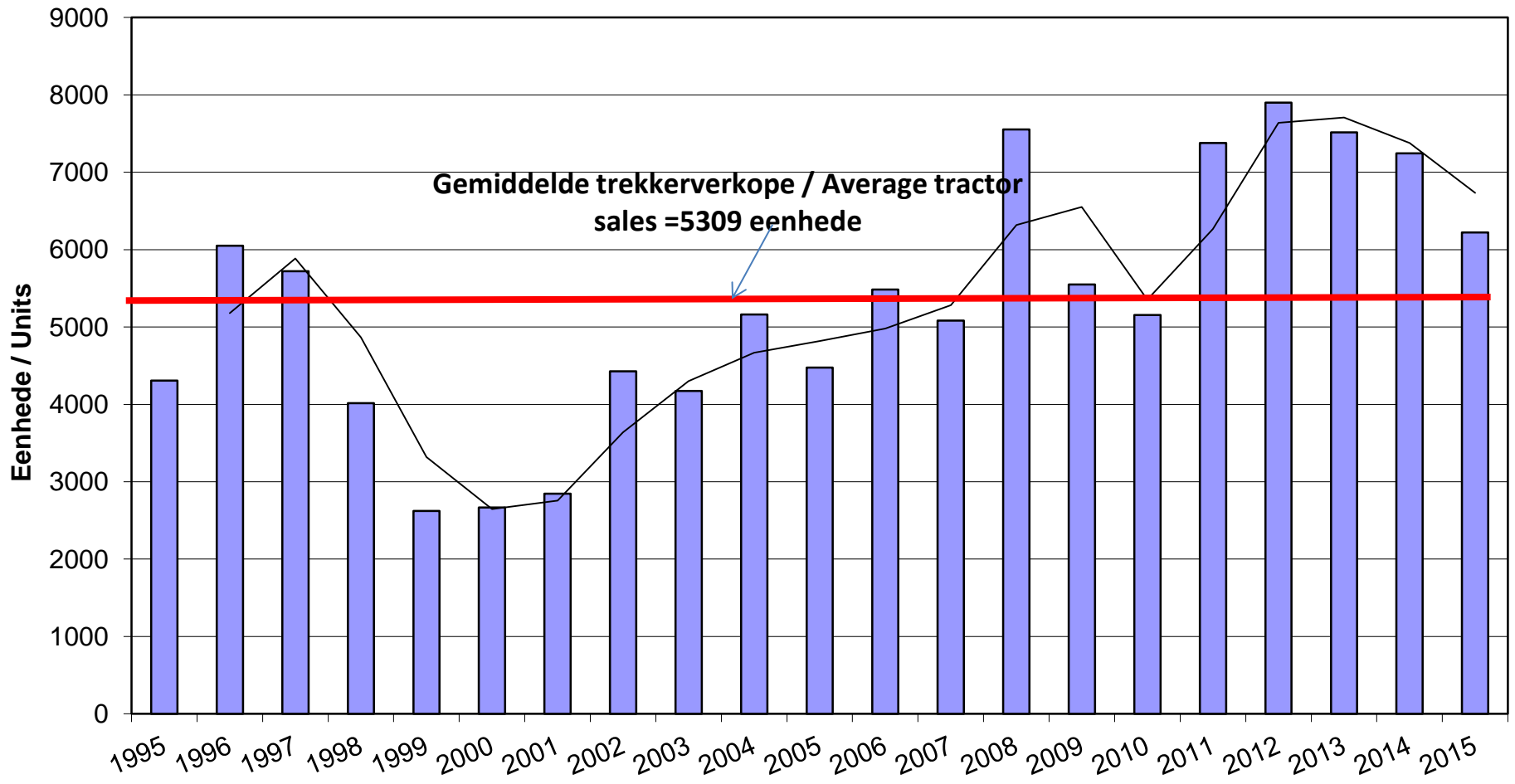


## Price changes in agricultural machinery equipment/ Prysverandering in landboumasjinerie

Equipment Classes	Year-on-year Change, %			
	Aug-16	Sep-16	Oct-16	Nov-16
Tractors	20.4	20.6	19.6	17.8
Combine Harvester	10.2	9.7	8.5	7.5
Hay, Forage Equipment	14.9	15.3	13.8	12.5
Implements	12.6	12.7	11.5	10.2
<b>Overall</b>	<b>16.4</b>	<b>16.6</b>	<b>15.4</b>	<b>13.9</b>



# Annual Tractor sales/Jaarlikse trekker verkope





# Annual combine harvester sales/Jaarlikse Stroperverkope

