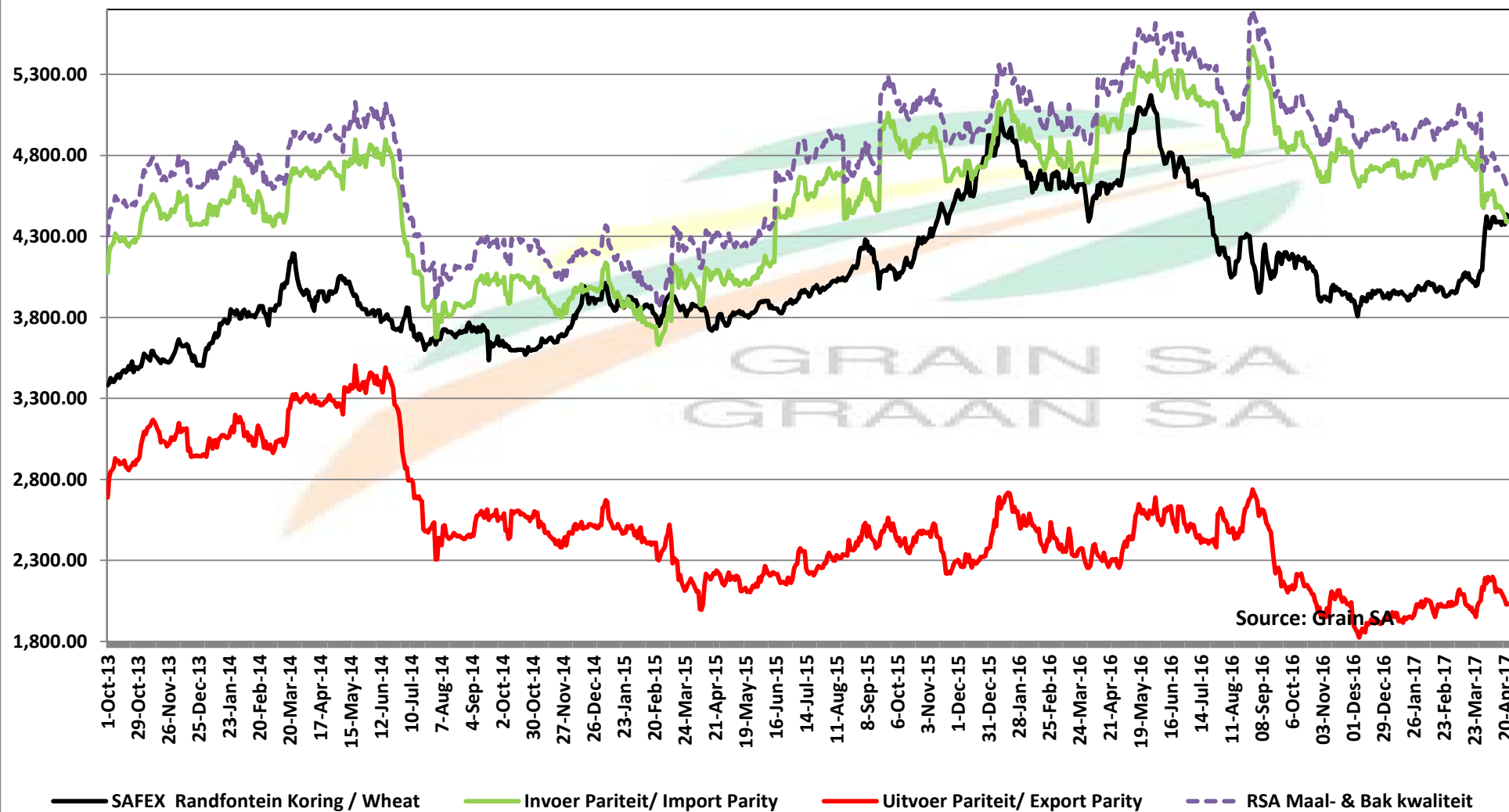


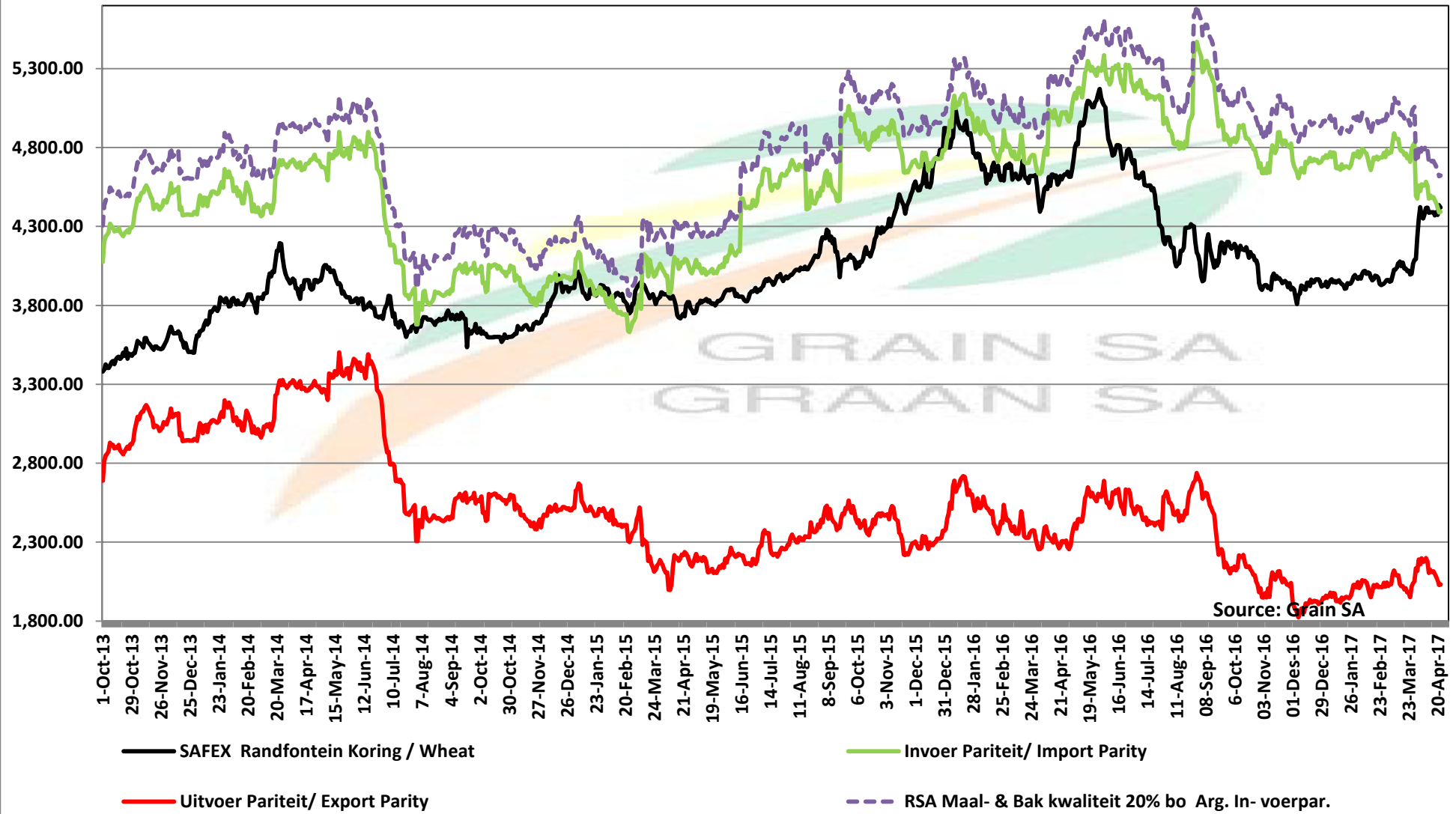
PRICES OF RSA AND ARGENTINE WHEAT DELIVERED IN RANDFONTEIN

PRYSE VAN RSA EN ARGENTYNSE KORING GELEWER IN RANDFONTEIN

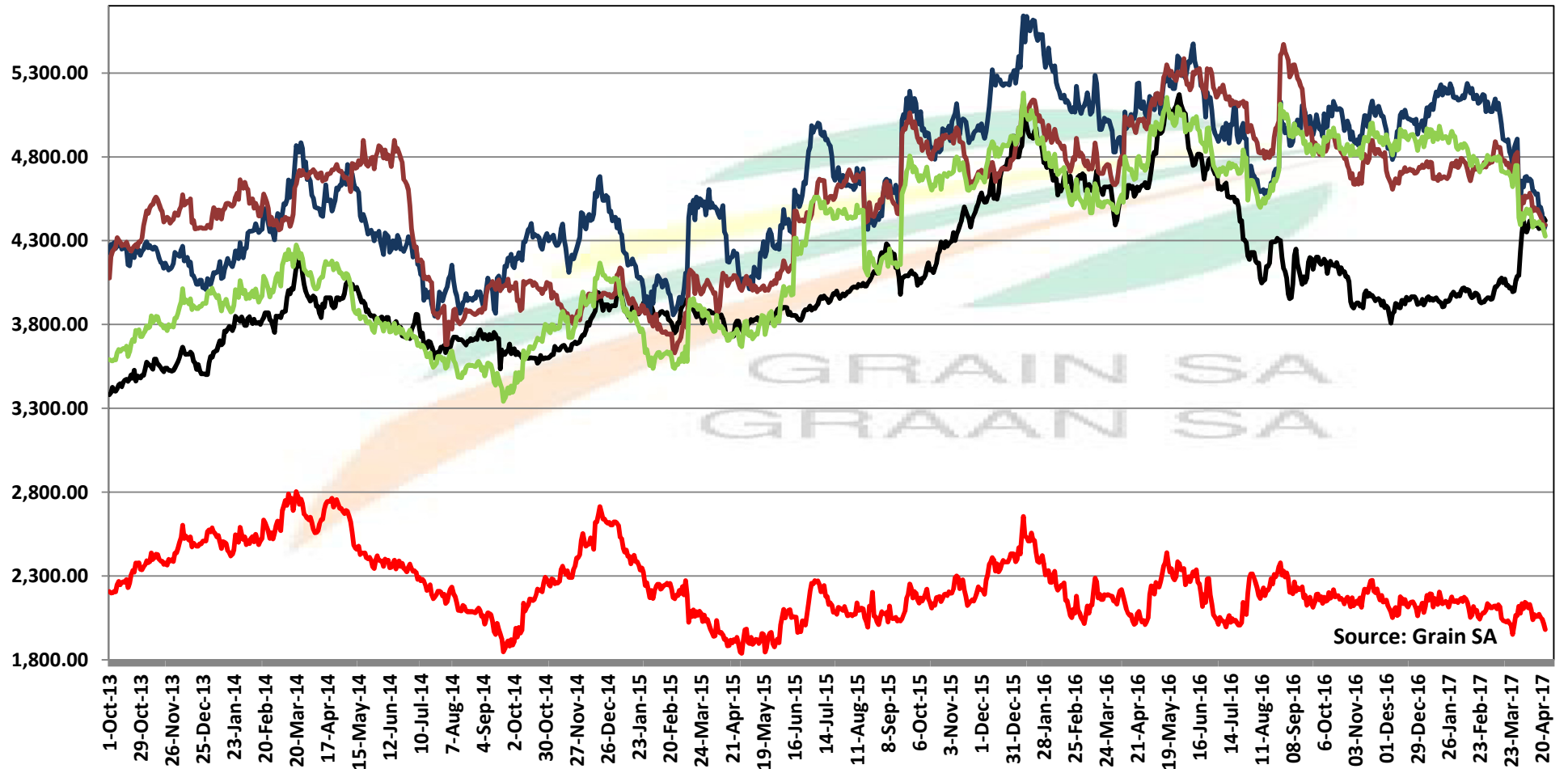


PRICES OF SOUTH AFRICAN AND USA WHEAT DELIVERED IN RANDFONTEIN

PRYSE VAN SUID AFRIKAANSE EN VSA KORING GELEWER IN RANDFONTEIN



PRICES OF WHEAT DELIVERED IN RANDFONTEIN PRYSE VAN KORING GELEWER IN RANDFONTEIN

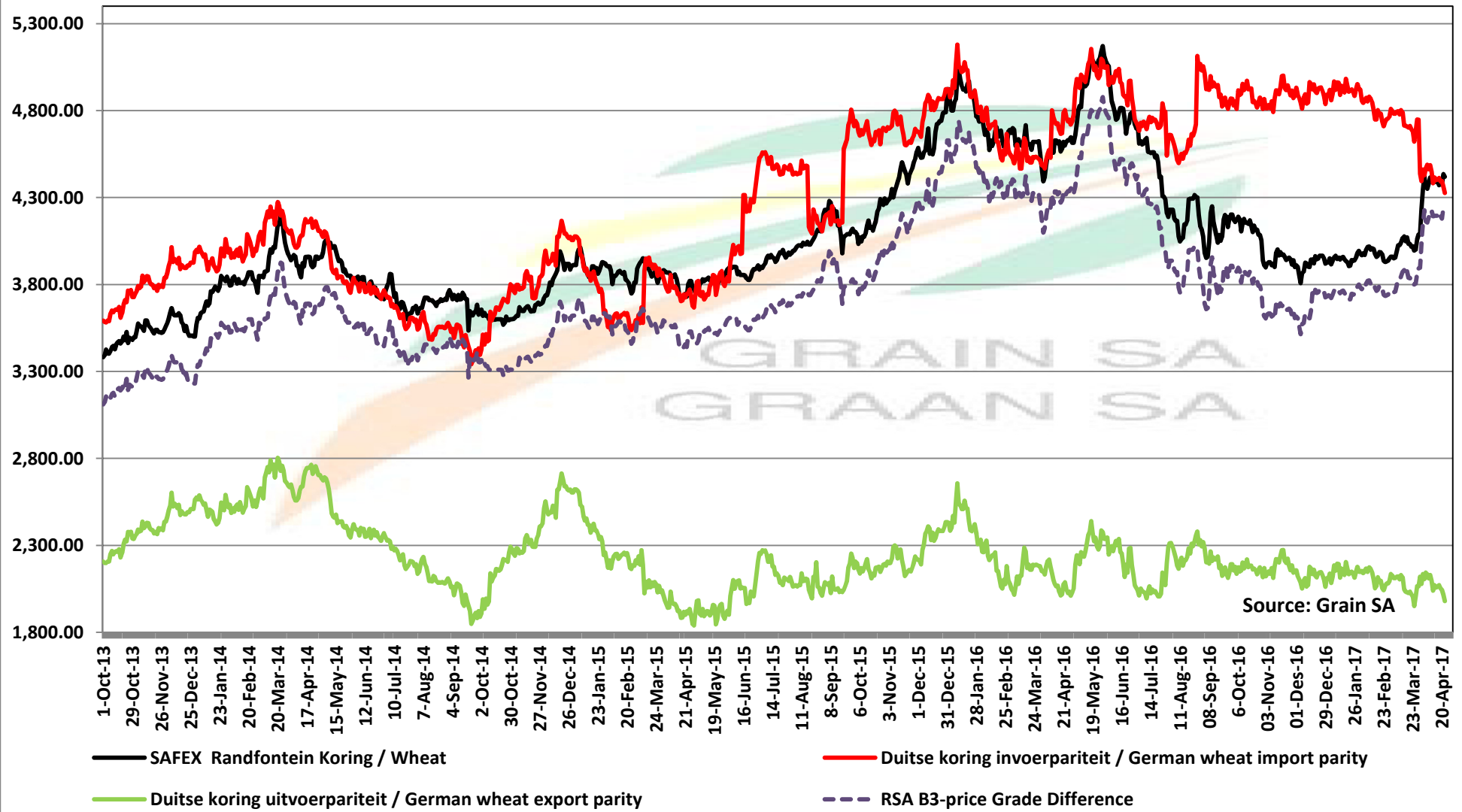


Source: Grain SA

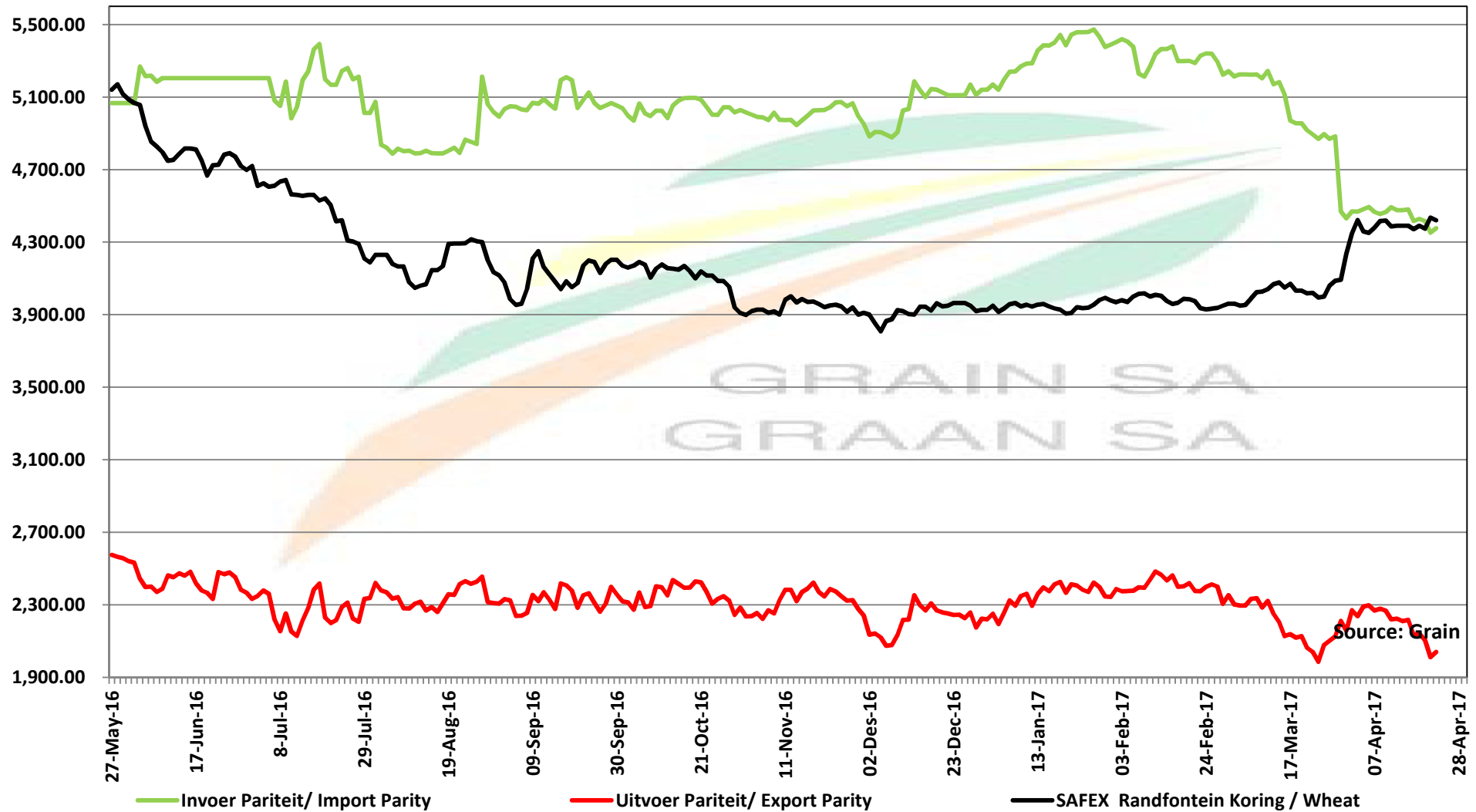
- SAFEX Randfontein Koring / Wheat
- Argentynse Koring Invoerpariteit / Argentinian Wheat Import Parity
- Duitse koring Uitvoerpariteit / German wheat Export parity
- Koring VSA HRW #2 / Wheat USA HRW #2
- Duitse Koring Invoerpariteit / German Wheat Import Parity

PRICES OF RSA AND GERMAN WHEAT DELIVERED IN RANDFONTEIN

PRYSE VAN RSA EN DUITSTE KORING GELEWER IN RANDFONTEIN

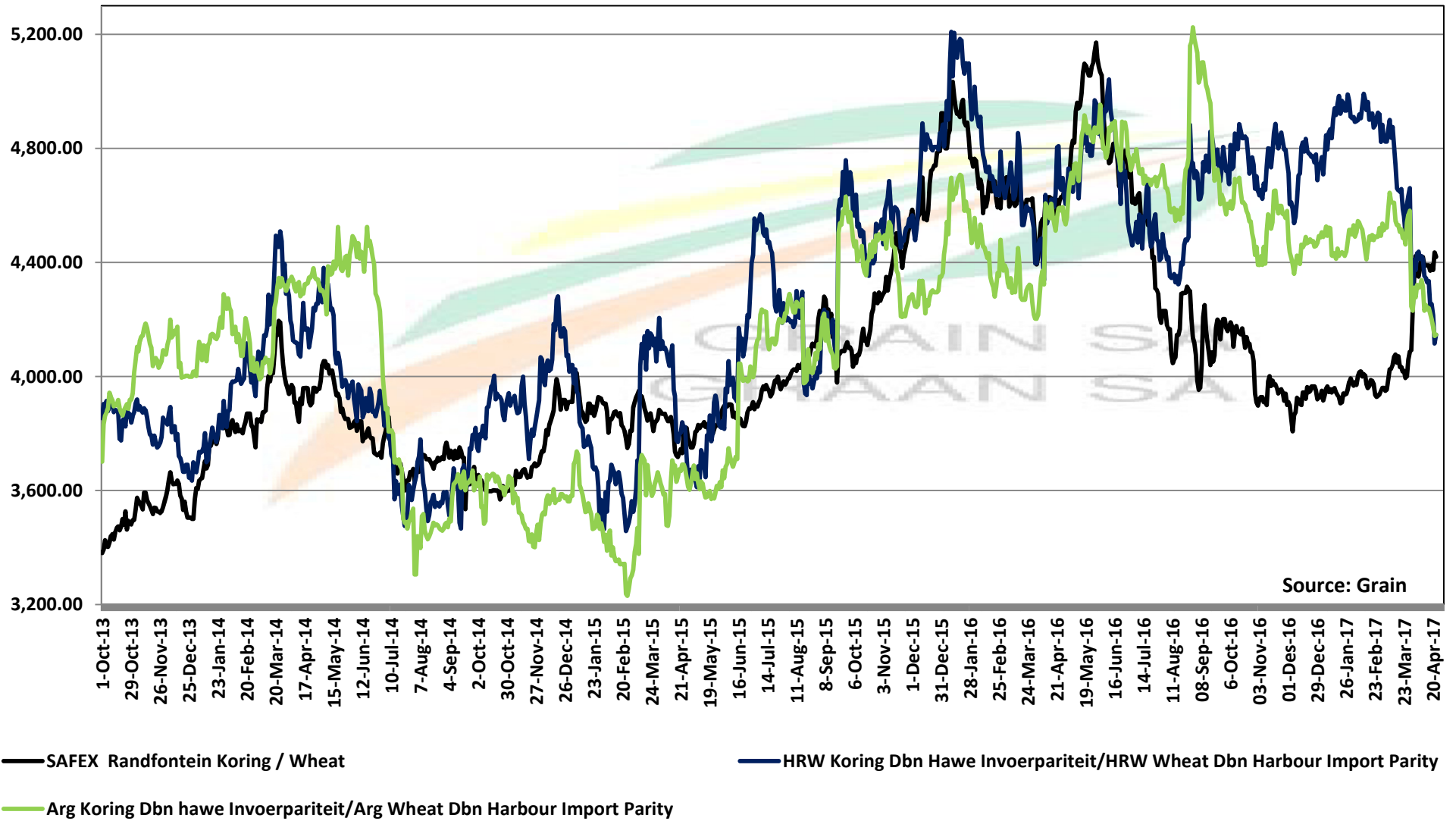


PRICES OF HRW WHEAT DELIVERED IN MEI 2017 (RANDFONTEIN)
PRYSE VAN HRW KORING VIR LEWERING IN MAY 2017 (RANDFONTEIN)



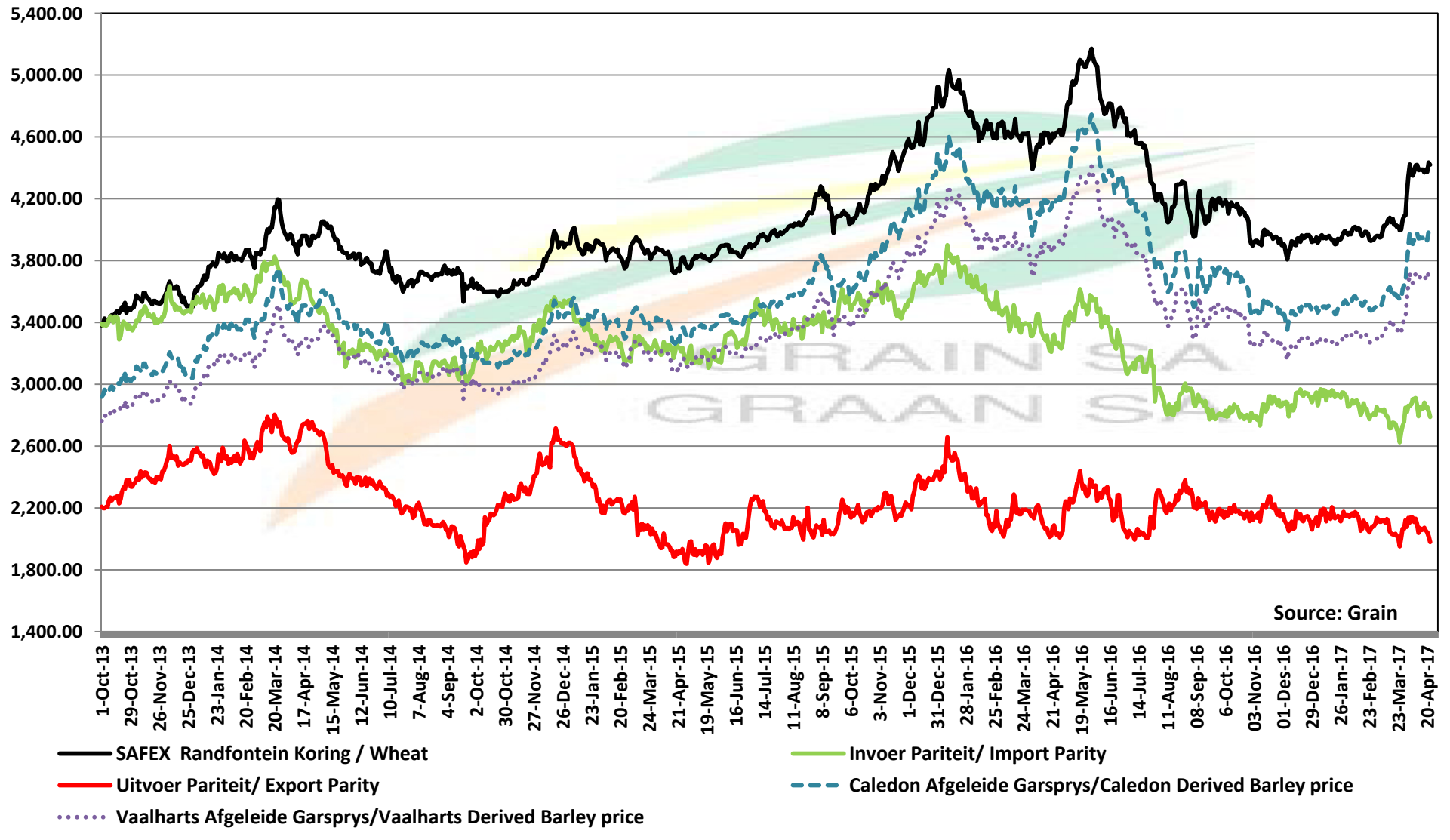
Source: Grain

PRICES OF WHEAT DELIVERED IN DURBAN HARBOUR PRYSE VAN KORING VIR LEWERING IN DURBAN HAWE



PRICES OF BARLEY DELIVERED IN RANDFONTEIN

PRYSE VAN GARS GELEWER IN RANDFONTEIN



IMPORT PARITY OF USA HRW AND FRANCE FEED BARLEY

INVOERPARITEIT VAN VSA HRW KORING EN FRANSE VOERGARS

