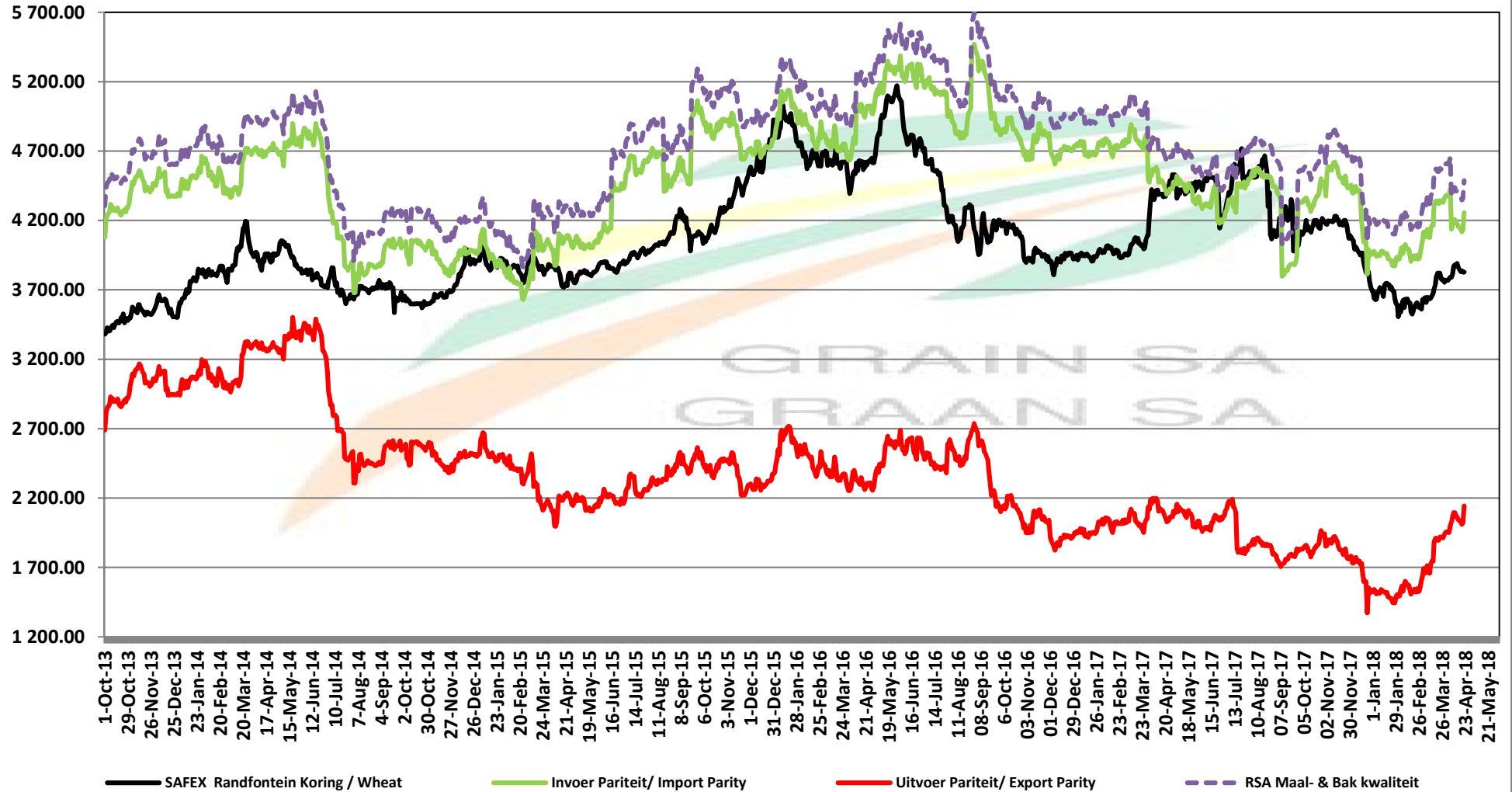


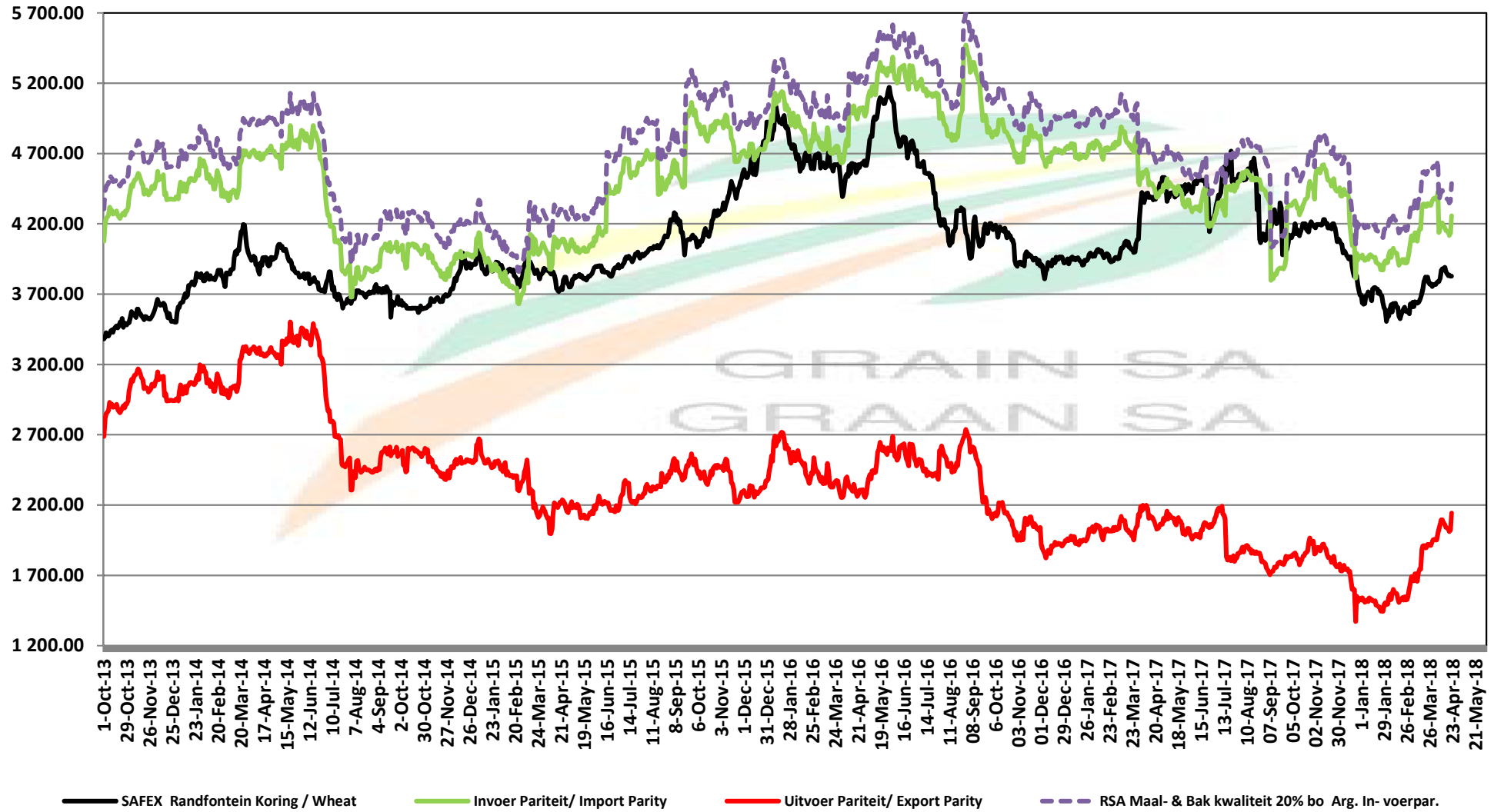
# PRICES OF RSA AND ARGENTINE WHEAT DELIVERED IN RANDFONTEIN PRYSE VAN RSA EN ARGENTYNSE KORING GELEWER IN RANDFONTEIN



Source: Grain SA

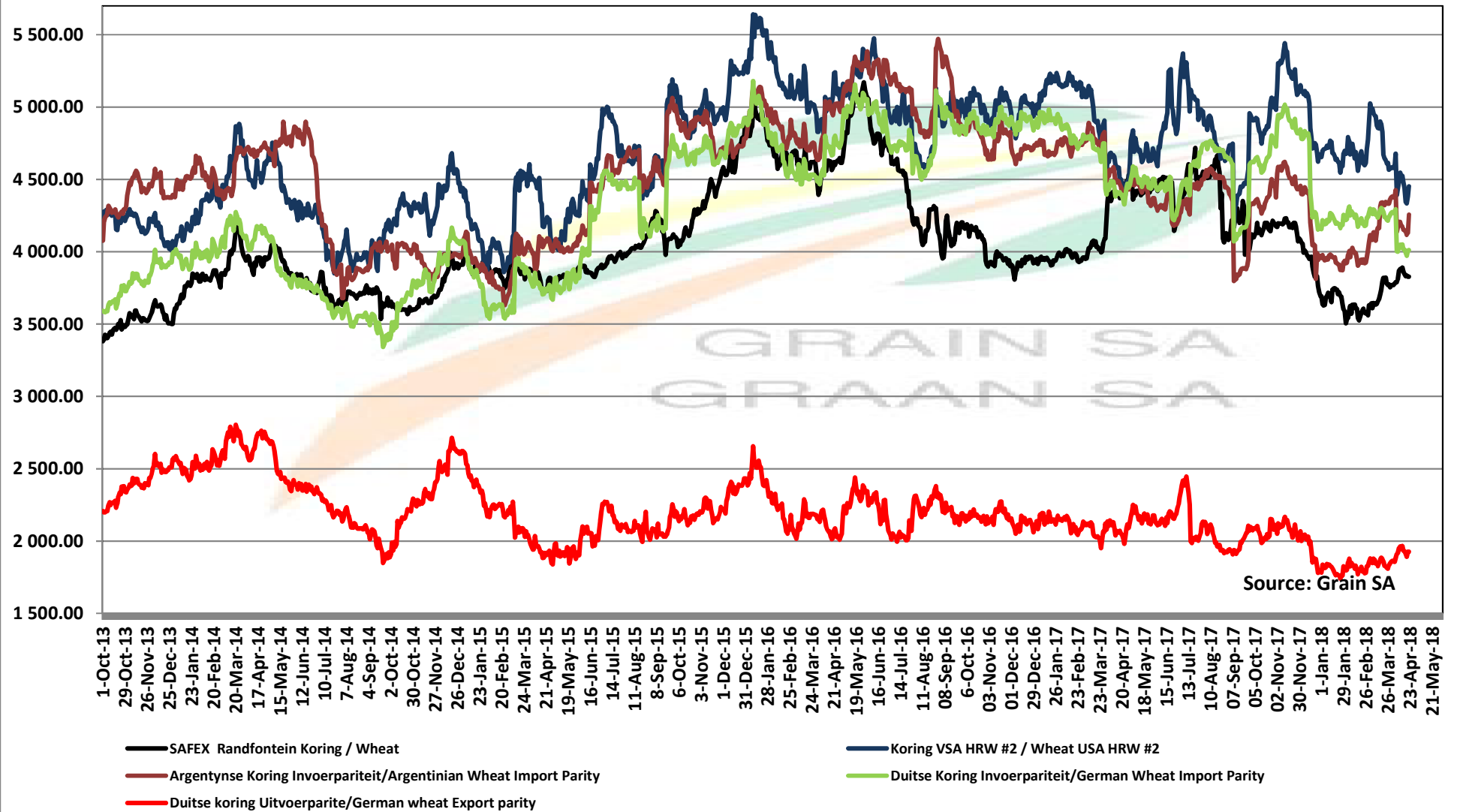
# PRICES OF SOUTH AFRICAN AND USA WHEAT DELIVERED IN RANDFONTEIN

## PRYSE VAN SUID AFRIKAANSE EN VSA KORING GELEWER IN RANDFONTEIN

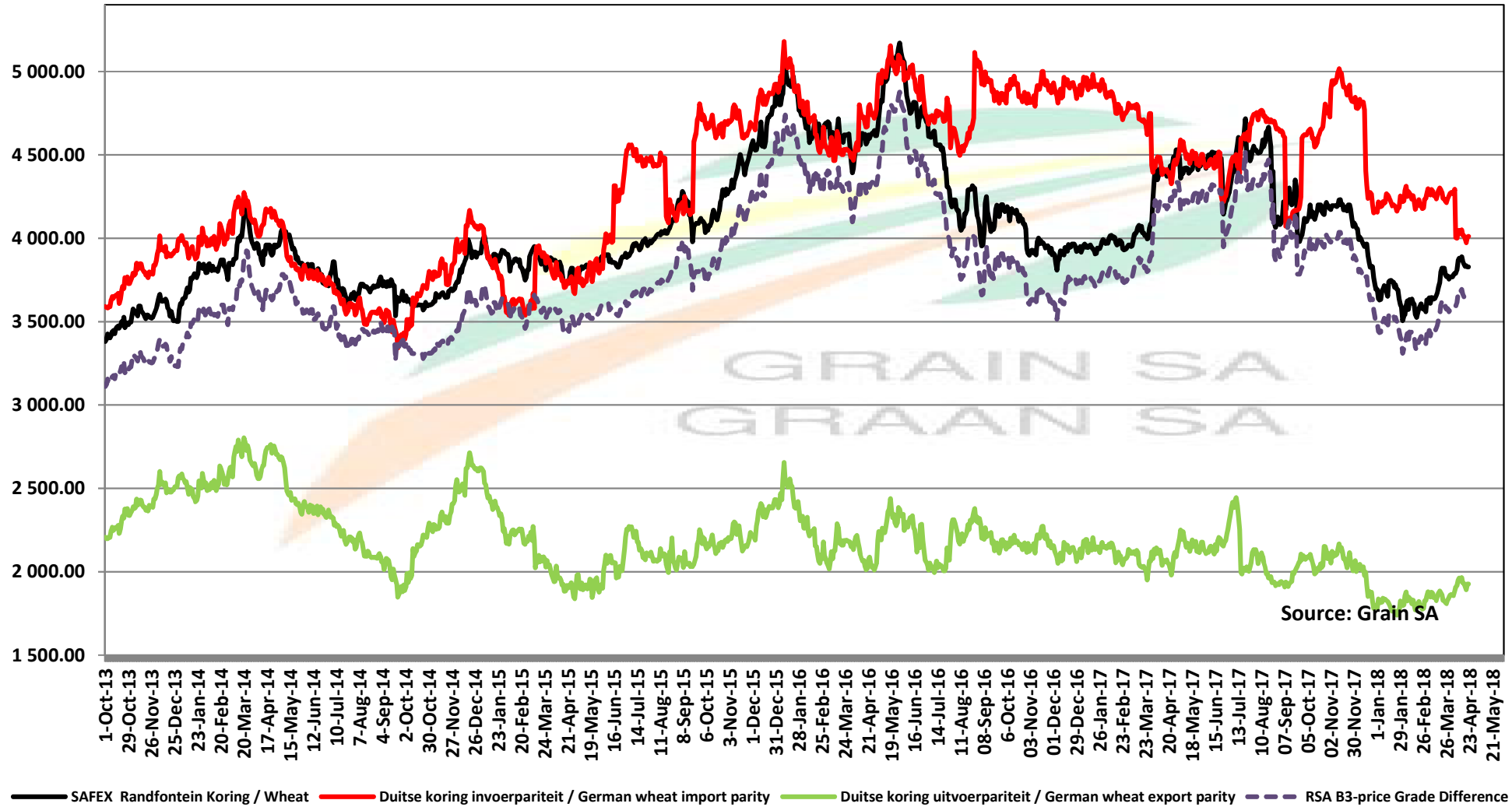


Source: Grain SA

# PRICES OF WHEAT DELIVERED IN RANDFONTEIN PRYSE VAN KORING GELEWER IN RANDFONTEIN

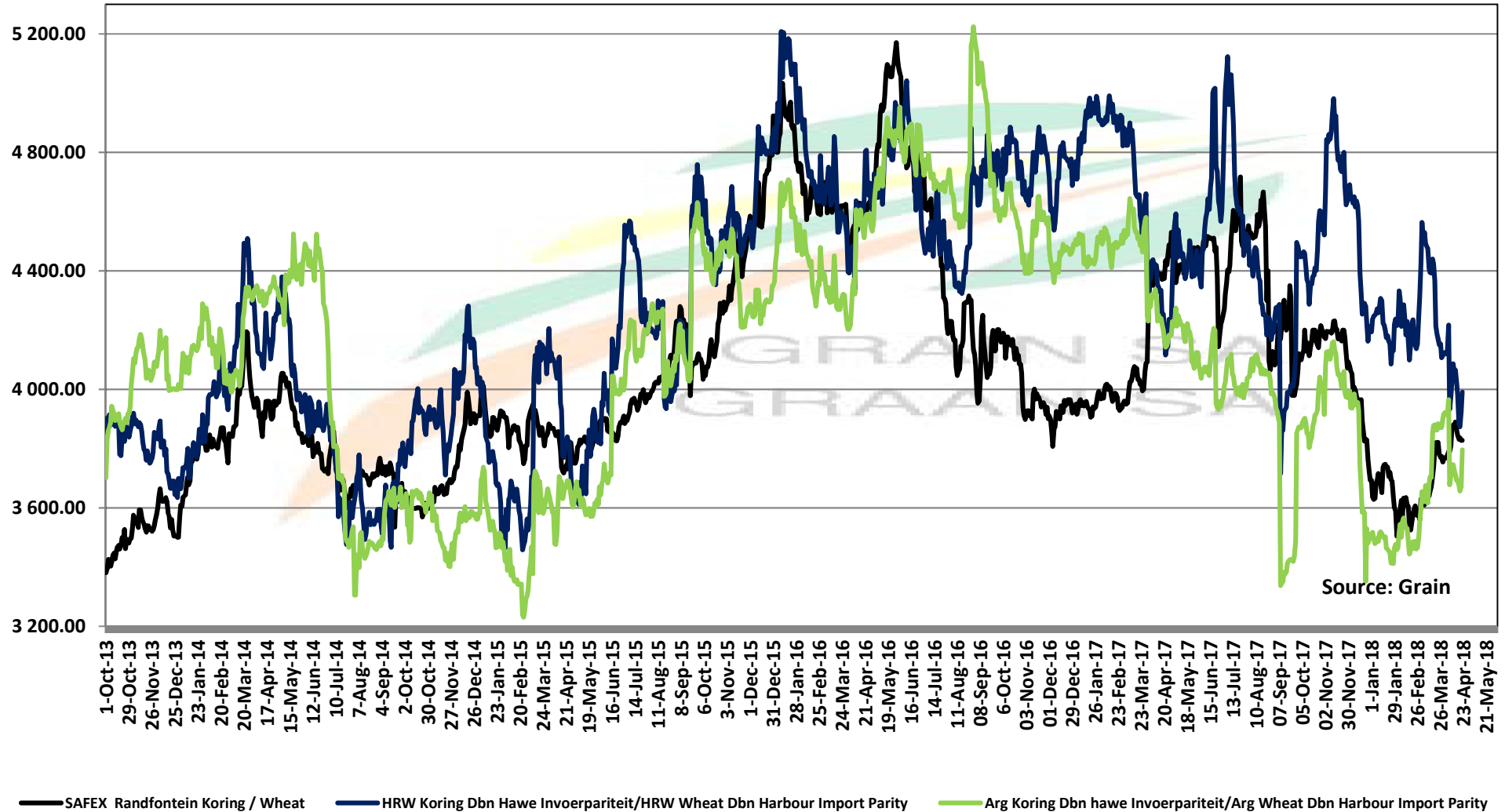


# PRICES OF RSA AND GERMAN WHEAT DELIVERED IN RANDFONTEIN PRYSE VAN RSA EN DUITSTE KORING GELEWER IN RANDFONTEIN



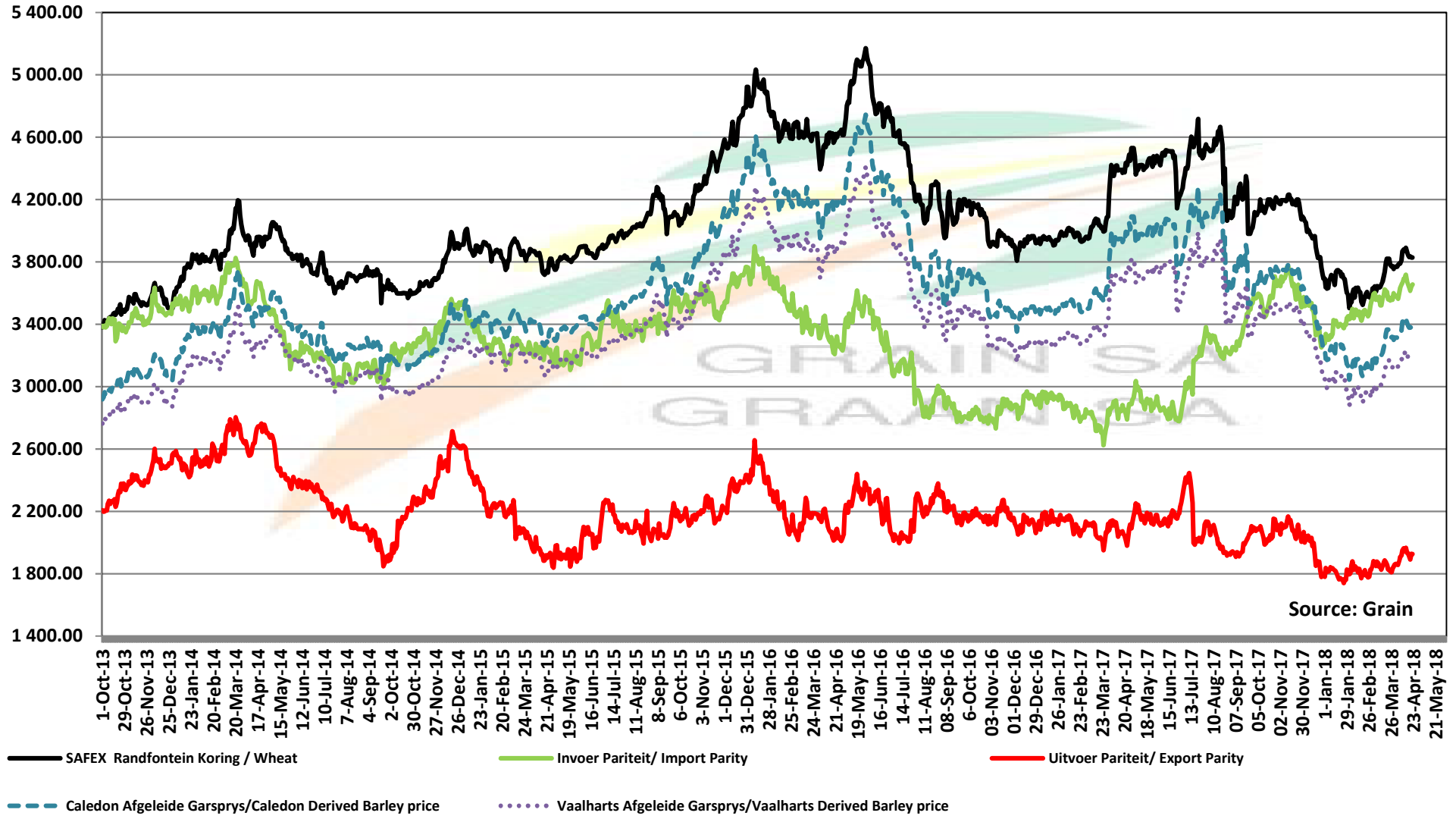
— SAFEX Randfontein Koring / Wheat — Duitse koring invoerpariteit / German wheat import parity — Duitse koring uitvoerpariteit / German wheat export parity — RSA B3-price Grade Difference

# PRICES OF WHEAT DELIVERED IN DURBAN HARBOUR PRYSE VAN KORING VIR LEWERING IN DURBAN HAWE



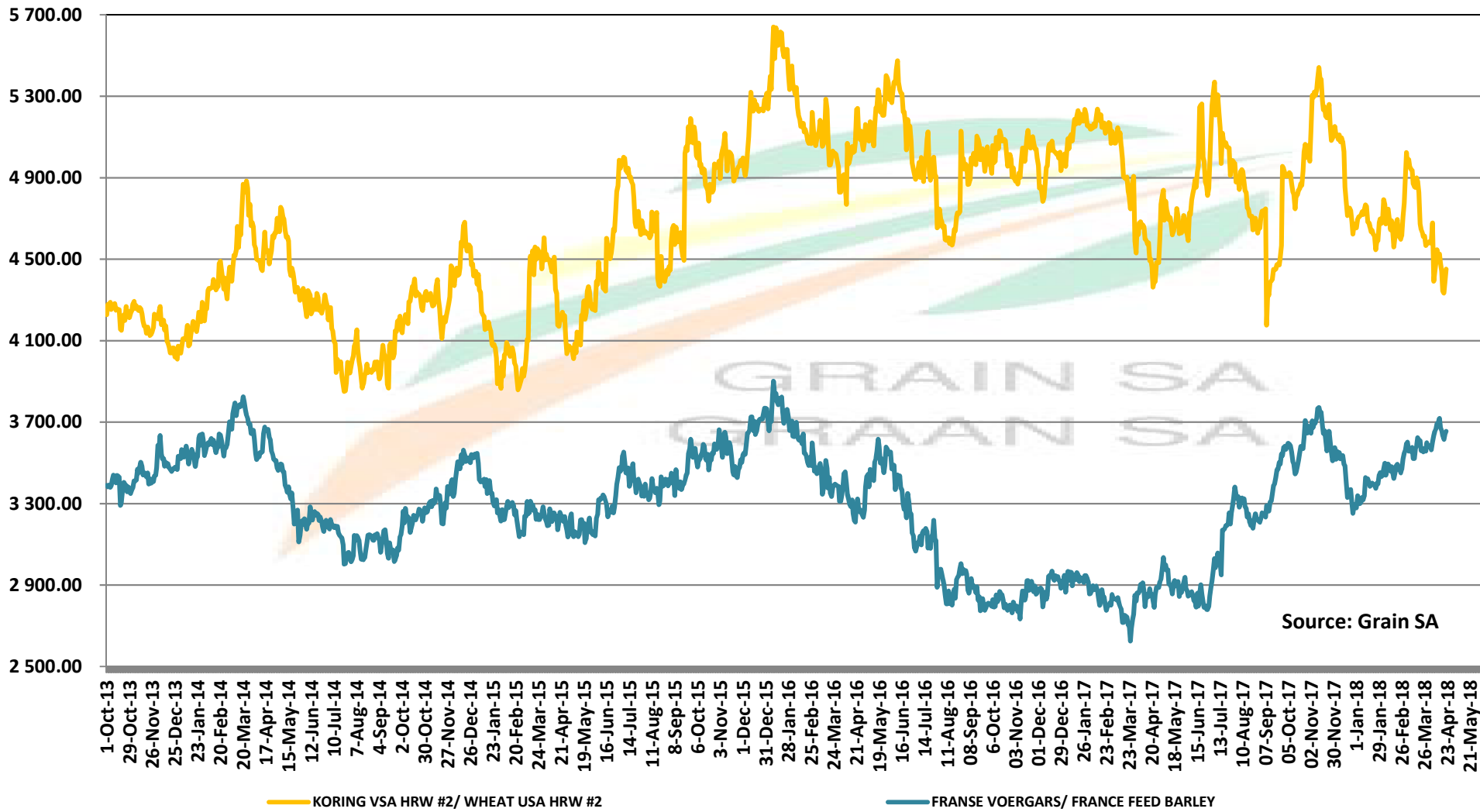
# PRICES OF BARLEY DELIVERED IN RANDFONTEIN

## PRYSE VAN GARS GELEWER IN RANDFONTEIN



# IMPORT PARITY OF USA HRW AND FRANCE FEED BARLEY

## INVOERPARITEIT VAN VSA HRW KORING EN FRANSE VOERGARS



Source: Grain SA

— KORING VSA HRW #2/ WHEAT USA HRW #2      — FRANSE VOERGARS/ FRANCE FEED BARLEY