

# Machinery Report/Masjinerie Verslag



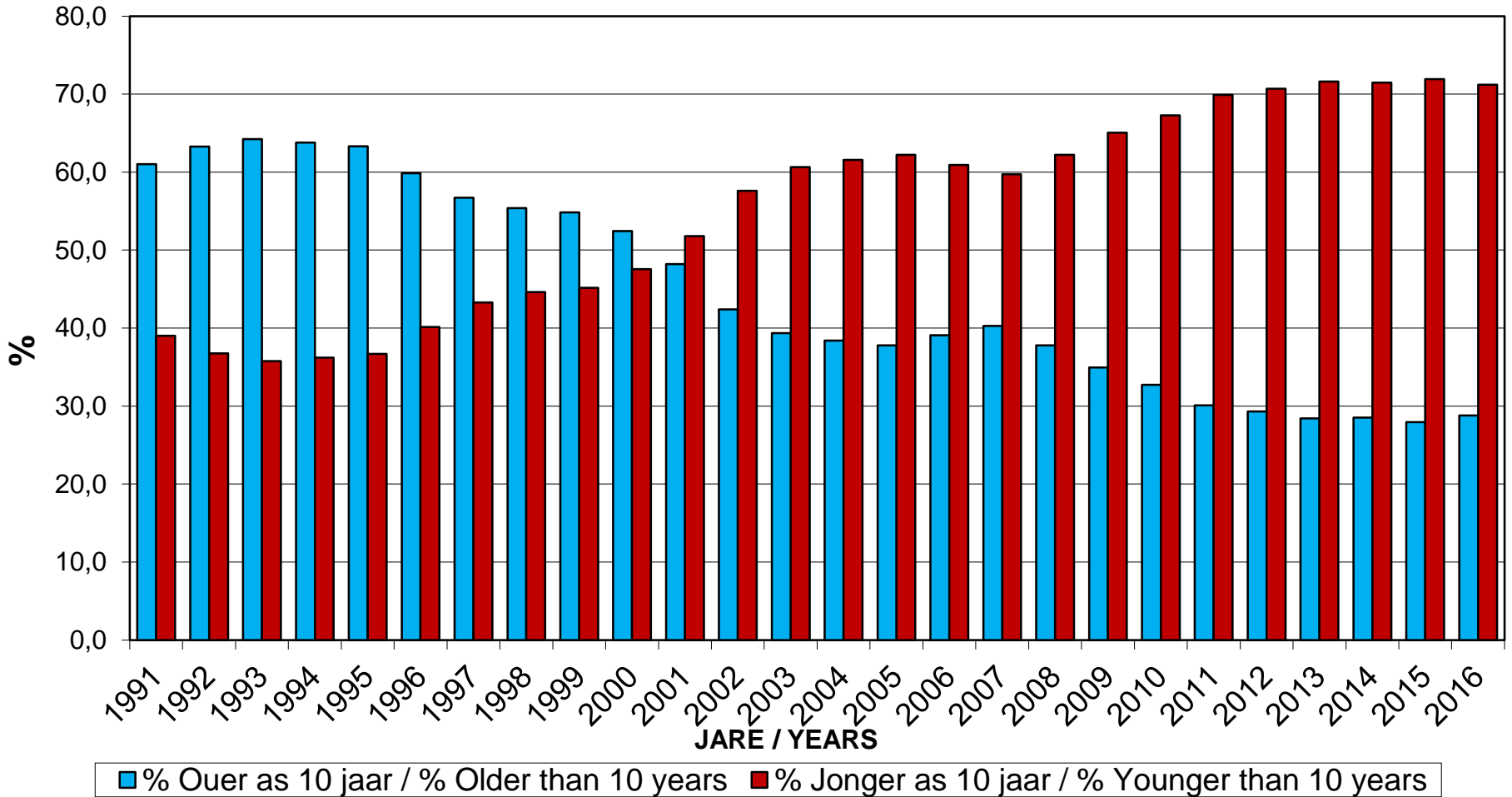
Updated: October 2017

Opgedateer: Oktober 2017

**Disclaimer:** *The information herein has been obtained from various sources, the accuracy and/or completeness of which Grain SA does not guarantee and for which Grain SA accepts no liability. Any prices or levels contained herein are preliminary and indicative only and do not represent bids or offers. These indications are provided solely for your information and consideration.*

# Distribution of Tractor age/ Verspreiding van trekker ouderdom

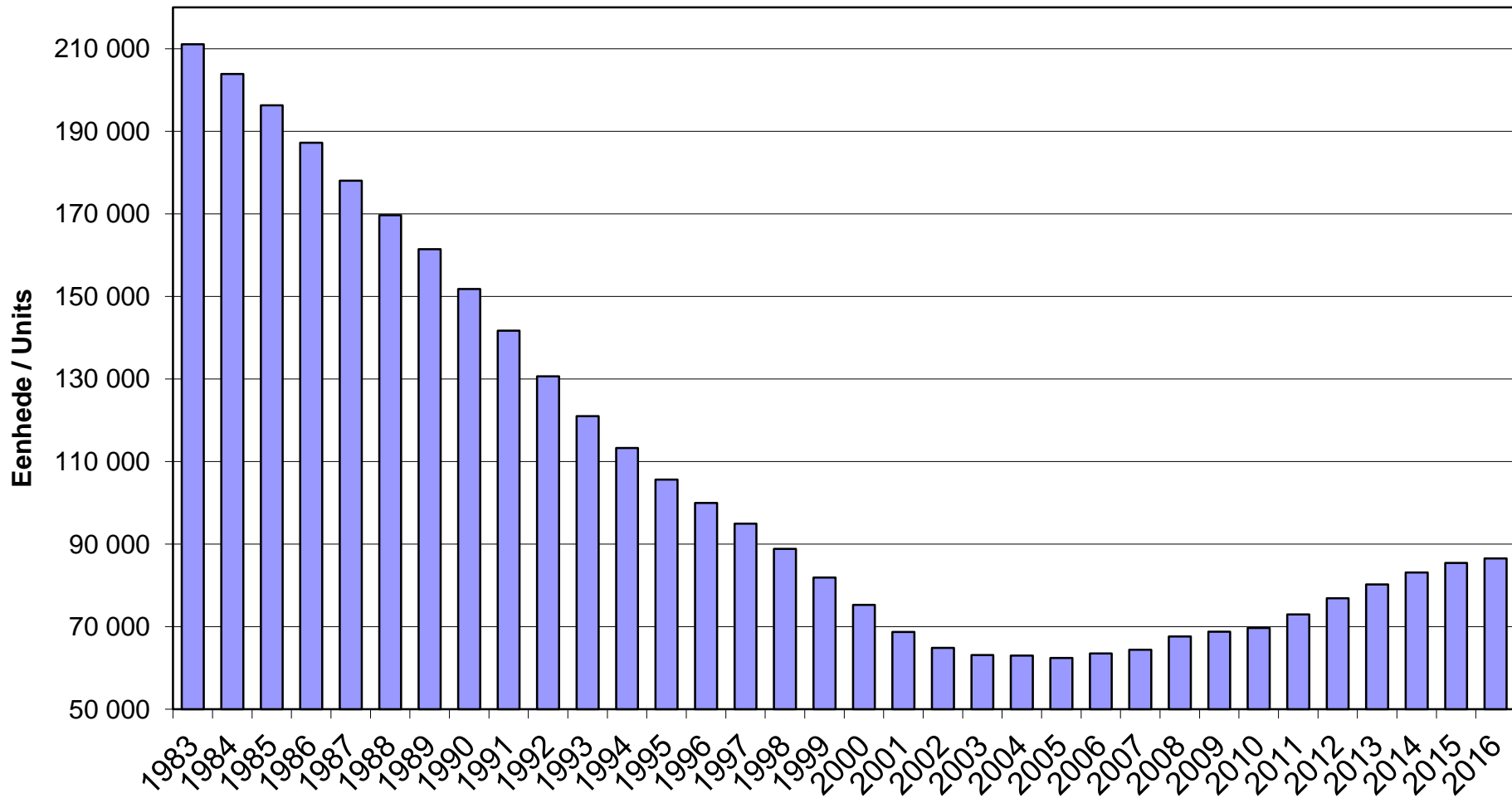
DISTRIBUTION OF TRACTOR AGE  
VERSPREIDING VAN TREKKER OUDERDOM





# Total Tractor Fleet / Total Trekkervloot

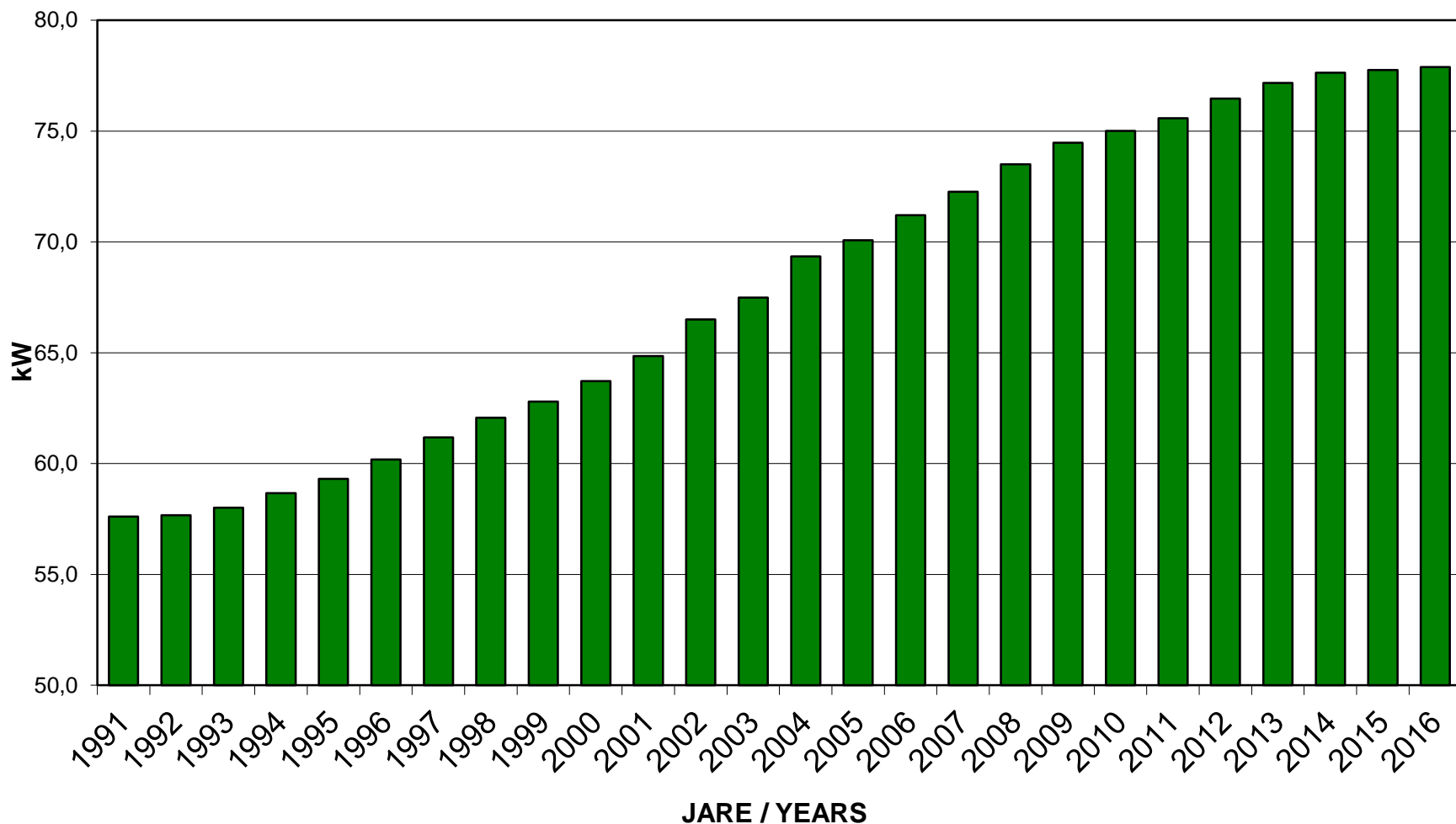
TOTAL TREKKERVLOOT  
TOTAL TRACTOR FLEET





# Average Tractive power of Tractor fleet/ Gemiddelde trekkrag van trekkervloot

AVERAGE TRACTIVE POWER OF GRACTOR FLEET /  
GEMIDDELDE TREKKRAG VAN TREKKERVLOOT





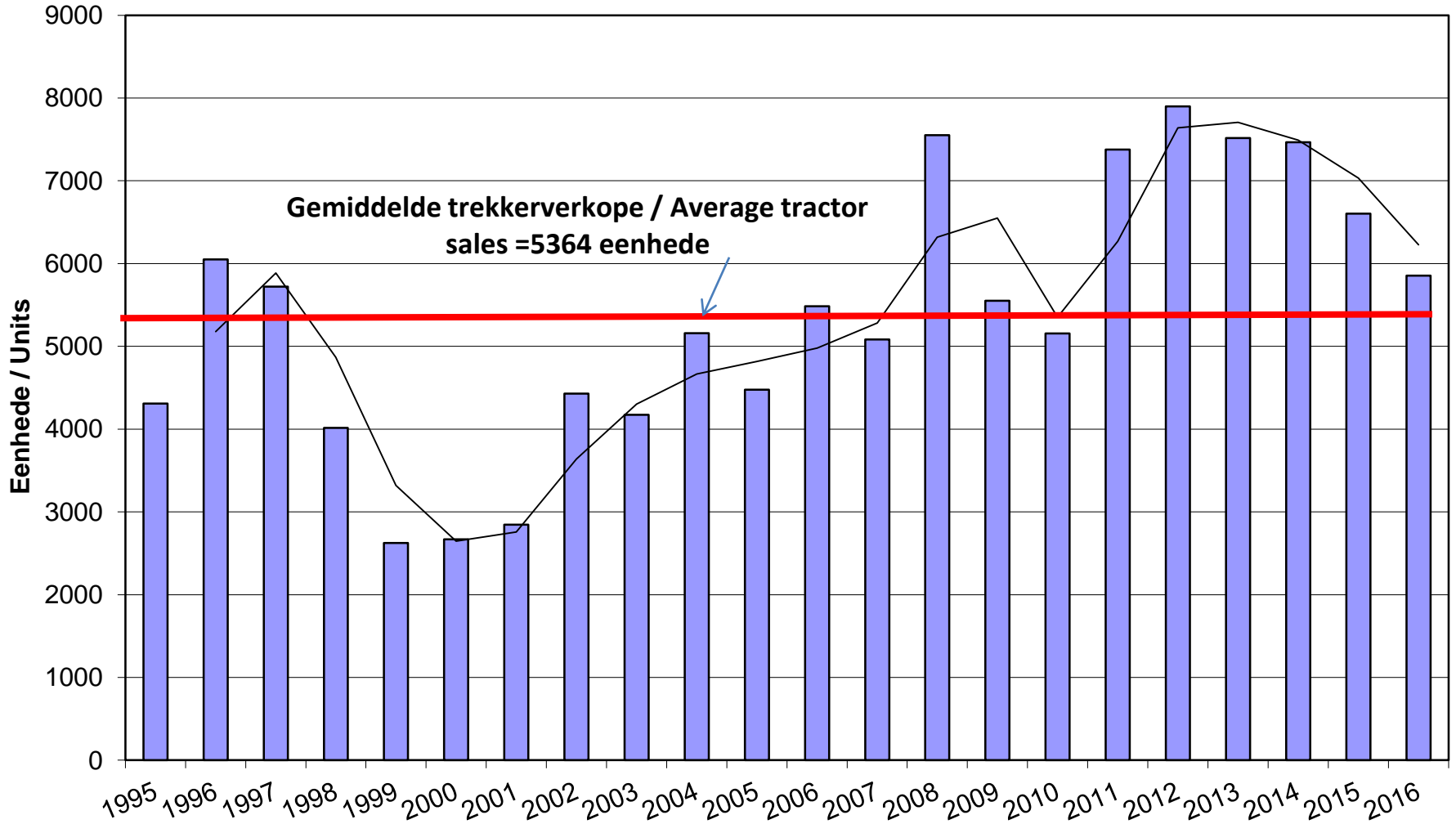
## Price changes in agricultural machinery equipment/ Prysverandering in landboumasjinerie

Equipment Classes	Year-on-year Change, %			
	Jun-17	Jul-17	Aug-17	Sept-17
Tractors	-1,8	-2,6	-3,2	-3,6
Combine Harvester	-0,9	-1,1	-1,4	-0,2
Hay, Forage Equipment	1	-0,5	-1,5	-1,4
Implements	-0,1	-0,8	-1	-0,8
<b>Overall</b>	<b>-0,9</b>	<b>-1,7</b>	<b>-2,3</b>	<b>-2,2</b>



# Annual Tractor sales/Jaarlikse trekker verkope

## JAARLIKSE TREKKERVERKOPE ANNUAL TRACTOR SALES





# Annual combine harvester sales/Jaarlikse Stroperverkope

